

A full-body photograph of a man with dark hair and a beard, wearing a tan blazer over a patterned shirt and white trousers. He is looking directly at the camera with a serious expression. The background is a plain, light-colored wall.

**NOS**  
HERBST | WINTER  
**2020**

---

NOS AUTUMN | WINTER 2020

01.07. - 31.12.2020

ET ERNA



ET ER NA

Meisterhaft seit 1863.



# Für jede Figur die passende Schnittführung

SHAPES FOR EVERY BUILD



## **COMFORT FIT**

DIE BEQUEME  
SCHNITTFÜHRUNG.  
THE COMFORTABLE FIT.



## **MODERN FIT**

DIE REGULÄRE  
SCHNITTFÜHRUNG.  
THE REGULAR FIT.



## **SLIM FIT**

DIE FIGURBETONTE  
SCHNITTFÜHRUNG.  
THE NARROW FIT.



## **SUPER SLIM**

DIE EXTRA SCHMALE  
SCHNITTFÜHRUNG.  
THE FIGURE-HUGGING CUT.

# ETERNA

# EVERYDAY FOR FUTURE.



## PRODUCT



Geprüft auf Schadstoffe.  
[www.oeko-tex.com/standard100](http://www.oeko-tex.com/standard100)

Schadstoffgeprüfte  
Produkte

Products tested for  
harmful substances



## PRODUCTION



Sustainable Textile Production.  
[www.oeko-tex.com/step](http://www.oeko-tex.com/step)

Saubere Umwelt  
Soziale Verantwortung

Clean environment  
Social responsibility



## CERTIFICATION OF THE ENTIRE SUPPLY CHAIN



Geprüft auf Schadstoffe und nachhaltig  
produziert gemäß OEKO-TEX® Richtlinien.  
[www.madeingreen.com](http://www.madeingreen.com)

Schadstoffgeprüfte Materialien  
Sichere & soziale Arbeitsplätze  
Umweltfreundliche Betriebe

Materials tested for harmful  
substances, secure and social jobs,  
environmentally friendly company

# WIR MACHEN ÖKO WIEDER LOGISCH!



EINFACH #NATURALLY: Wir handeln selbstverständlich nachhaltig. Für ETERNA ist es ganz natürlich, Mode und Umwelt miteinander zu vereinen.

We make eco logical again! SIMPLY #NATURALLY: We act sustainably as a matter of course. For ETERNA it is natural to unite fashion and environment.

**ZERTIFIZIERT**  
MIT HÖCHSTEM STANDARD

Wir sind bereits **seit 20 Jahren** - als weltweit erster Hersteller in der Modewelt - mit dem höchsten OEKO-TEX®-Standard zertifiziert.

We have been certified with the highest OEKO-TEX® standard for **20 years** - as the world's first manufacturer in the fashion world.

**KLIMANEUTRALE**  
FERTIGUNG



Große Teile der Produktion u. a. die Premiumlinie **1863 by ETERNA** und die WE CARE Kollektionen werden durch Kompensationsleistung **CO<sub>2</sub>-neutral gefertigt**.

Large parts of the production are made CO<sub>2</sub> neutral by compensation payments - also our premium line 1863 by ETERNA and our WE CARE collections.

**WE CARE**  
KOLLEKTION



WE CARE Kollektionen bestehen ausschließlich aus **nachwachsenden** und **recyclten Materialien**. Mit dem Verkauf unterstützen wir den Naturschutzbund.

WE CARE collections exclusively consist of renewable and recycled materials. We support the nature conservation association by selling these items.



[WWW.ETERNA-NATURALLY.COM](http://WWW.ETERNA-NATURALLY.COM)

Einfach, transparent, nachweisbar.

Simple, transparent, verifiable.





LÄSSIGE ELEGANZ. ENTSPANNTER LOOK. DAS NEUE BUSINESSHEMD.

## SOFT TAILORING SHIRT

---

Business oder Casual? Bei den ETERNA-Hemden in Super Soft Quality ist diese Frage überflüssig: Bei den feinen, aber lässigen Hemden aus der Premiumlinie **1863 by ETERNA** kommen gewaschene Two-Ply-Stoffe und italienische Jersey-Qualitäten zum Einsatz.

Typisch für diese Premium-Hemden in „Super Soft Quality“ sind ein weicher Griff und ein verkürzter Schnitt für einen relaxten Look. Softe Kragen und Manschetten sorgen zudem für ein angenehmes Tragegefühl.



Business or Casual? The ETERNA shirts in Super Soft Quality this question is superfluous: the fine but casual shirts from the premium line **1863 by ETERNA** come with washed two-ply fabrics and Italian jersey qualities.

Typical for these premium shirts in „Super Soft Quality“ are a soft feel and a shortened cut for a relaxed look. Soft collars and cuffs also ensure that the shirts are comfortable to wear.

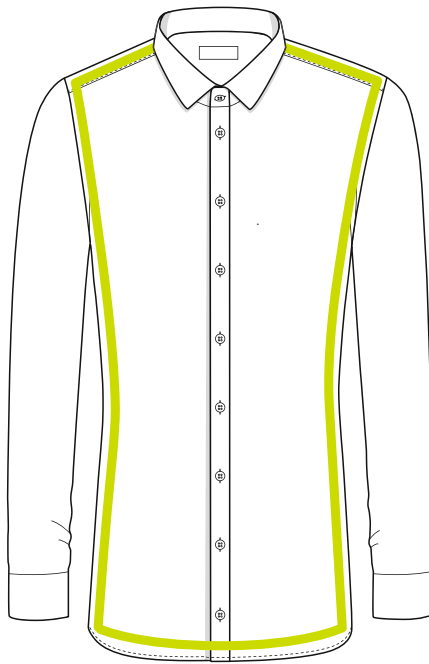


# SUPER SLIM

---

DIE EXTRA SCHMALE SCHNITTFÜHRUNG  
THE FIGURE-HUGGING CUT

1/1

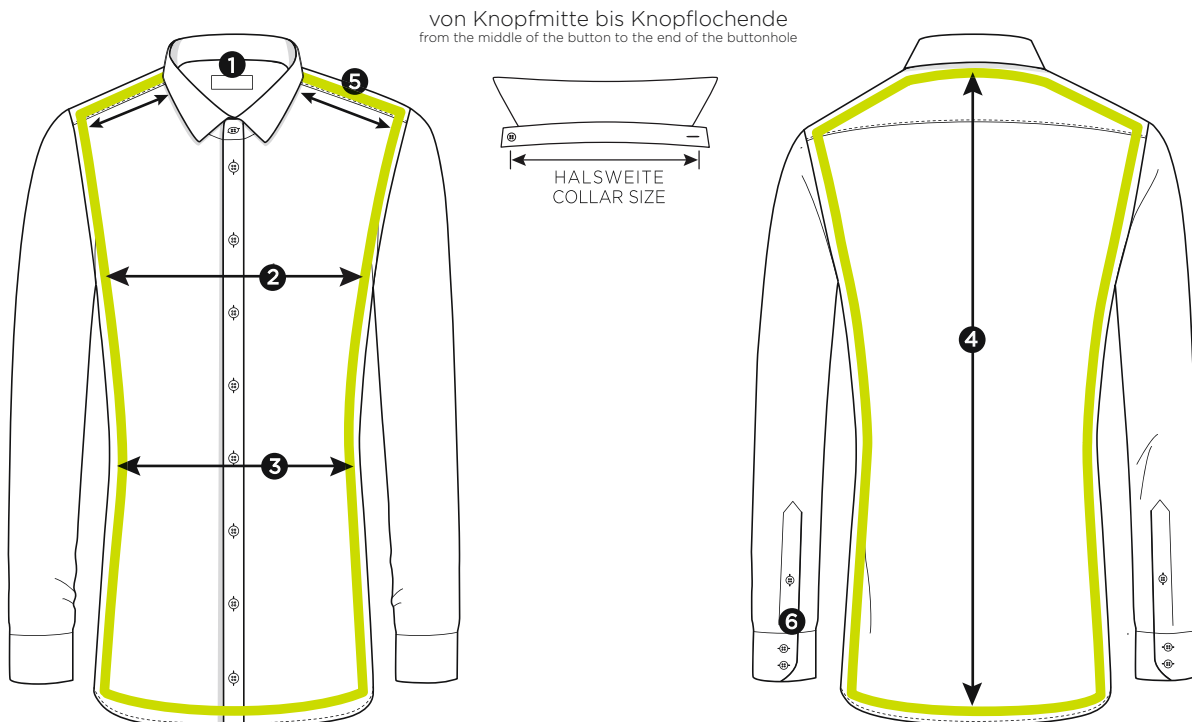


# Standard-Maßtabelle

standard measurement chart

SUPER  
SLIM

1	Halsweiten collar sizes	cm inch	36 14	37/38 14½/15	39/40 15½/15¾	41/42 16/16½	43/44 17/17½	45/46 17¾/18	47/48 18½/19	49/50 19¼/19½	52 20½	54 21¼
2	Oberweite chest measurement	COMFORT FIT		112	120	128	134	148	154	160	168	176
		MODERN FIT		110	116	122	132	138	146			
		SLIM FIT		102	110	116	124	134				
		<b>SUPER SLIM</b>	<b>98</b>	<b>102</b>	<b>110</b>	<b>116</b>	<b>124</b>					
3	Tailleweite waist measurement	COMFORT FIT		108	114	124	134	148	154	160	168	176
		MODERN FIT		102	106	114	122	130	138			
		SLIM FIT		92	98	104	112	122				
		<b>SUPER SLIM</b>	<b>79</b>	<b>83</b>	<b>89</b>	<b>95</b>	<b>103</b>					
4	Rumpflänge bei Äl 67 body length for SL 67	SLIM FIT		80	80	80	82	85				
		<b>SUPER SLIM</b>	<b>80</b>	<b>80</b>	<b>80</b>	<b>80</b>	<b>82</b>					
		COMFORT FIT		26	26	26	28	28	28	30	30	30
		MODERN FIT		26	26	26	28	28	28			
5	Bündchenlänge cuff length	SLIM FIT		26	26	26	28	28				
		<b>SUPER SLIM</b>	<b>26</b>	<b>26</b>	<b>26</b>	<b>26</b>	<b>28</b>					
		COMFORT FIT		26	26	26	28	28	28	30	30	30
		MODERN FIT		26	26	26	28	28	28			

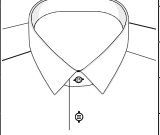
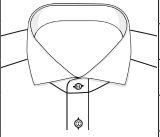


# NOS-Modelle

NOS styles

SUPER  
SLIM

Kragen- form  collar	Arm- länge  sleeves	Modell  style	Leiste  placket			Tasche  pocket		Saum  hemline		PATCHUNG Innensteg Kragen  mix&match inside collar stand	PATCHUNG Manschette  mix&match inside cuff	geteilter Kragensteg  half patch	PATCHUNG Passe  mix&match yoke	PATCHUNG Untertritt  mix&match inside placket	UMA  double cuff
			eingeschlagen	Biese	verdeckt	mit	ohne	gerade	rund						
			with fold	button facing	fly front	with	without	straight	round						

MINIKENT	1/1	Z181	✓				✓		✓						
															
HAI   SHARK	1/1	Z142	✓				✓		✓	✓					
	1/1	Z182	✓				✓		✓						



8424

**A**

**UNI STRETCH**

97% BAUMWOLLE | COTTON,  
 3% ELASTODIEN (XLA) | ELASTODIENE  
 Z181 MINI KENT  
 OHNE TASCHE | WITHOUT POCKET  
 36-44

8817

**B**

**TWILL**

100% BAUMWOLLE | COTTON  
 Z182 HAI | SHARK  
 OHNE TASCHE | WITHOUT POCKET  
 36-44

	00 Z181	 STRETCH  NON IRON
	10 Z181	 STRETCH  NON IRON
	19 Z181	 STRETCH  NON IRON
	39 Z181	 STRETCH  NON IRON

	00 Z182	 STRETCH  NON IRON
	21 Z182	 STRETCH  NON IRON

**BLICKDICHT  
 OPAQUE**



3377



PERFORMANCE SHIRT

70% LYOCELL | LOYCELL,  
 26% POLYAMID | POLYAMID,  
 4% ELASTHAN | ELASTANE  
 Z142 HAI | SHARK  
 OHNE TASCHE | WITHOUT POCKET  
 36-44

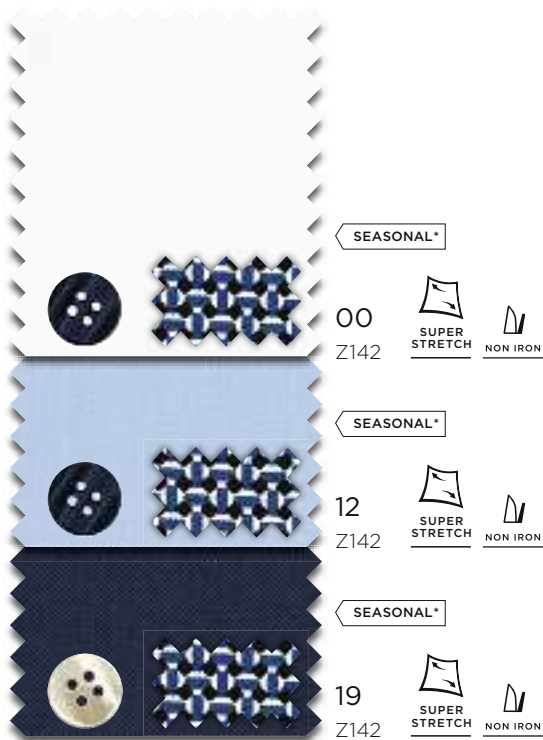


3379



PRINT STRETCH

97% BAUMWOLLE | COTTON,  
 3% ELASTOLEFIN | ELASTOLEFIN  
 Z182 HAI | SHARK  
 OHNE TASCHE | WITHOUT POCKET  
 36-44







# SLIM FIT

---

DIE FIGURBETONTE SCHNITTFÜHRUNG  
THE NARROW FIT

1/1

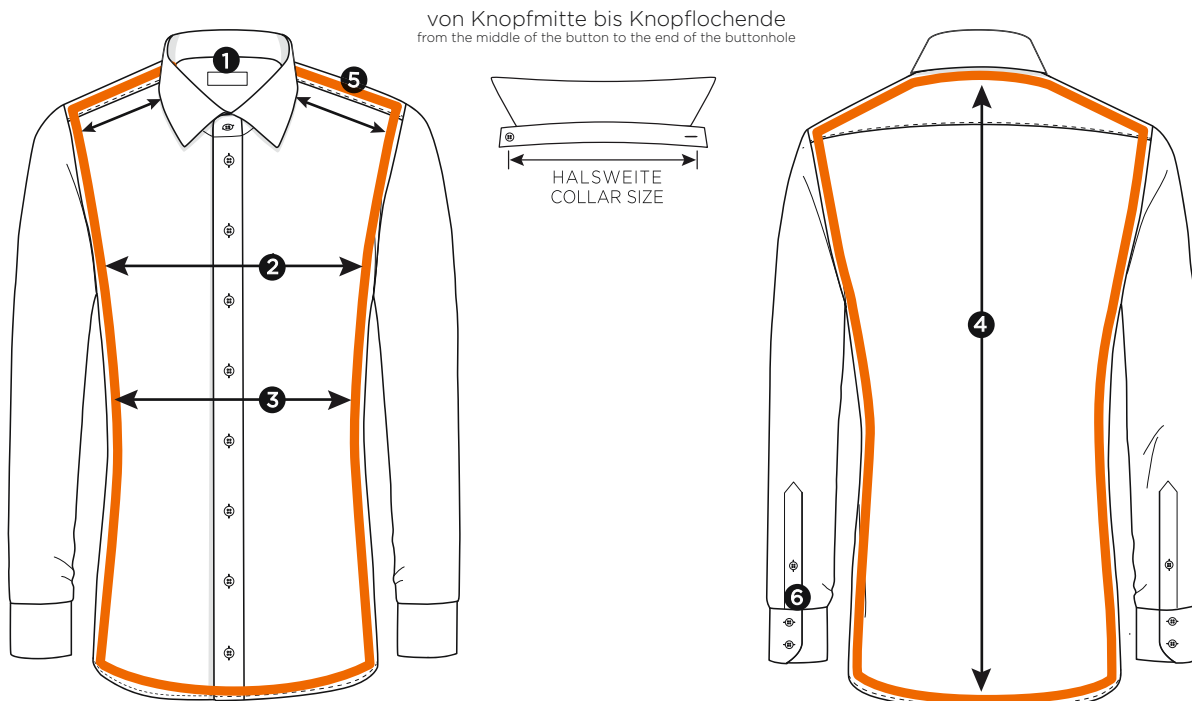


# Standard-Maßtabelle

standard measurement chart

SLIM  
FIT

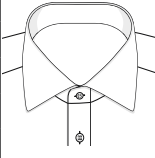
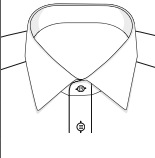
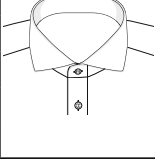
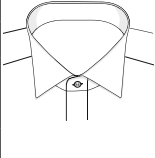
1	Halsweiten collar sizes	cm inch	36 14	37/38 14½/15	39/40 15½/15¾	41/42 16/16½	43/44 17/17½	45/46 17¾/18	47/48 18½/19	49/50 19¼/19½	52 20½	54 21¼	
2	Oberweite chest measurement	COMFORT FIT		112	120	128	134	148	154	160	168	176	
		MODERN FIT		110	116	122	132	138	146				
		<b>SLIM FIT</b>		<b>102</b>	<b>110</b>	<b>116</b>	<b>124</b>	<b>134</b>					
	SUPER SLIM	98	102	110	116	122							
3	Tailleweite waist measurement	COMFORT FIT		108	114	124	134	148	154	160	168	176	
		MODERN FIT		102	106	114	122	130	138				
		<b>SLIM FIT</b>		<b>92</b>	<b>98</b>	<b>104</b>	<b>112</b>	<b>122</b>					
	SUPER SLIM	79	83	89	95	103							
4	Rumpflänge bei Äl 67 body length for SL 67	<b>SLIM FIT</b>		<b>80</b>	<b>80</b>	<b>80</b>	<b>82</b>	<b>85</b>					
	SUPER SLIM	80	80	80	80	82							
	Rumpflänge bei Äl 72 body length for SL 72	COMFORT FIT		90	90	90	90	90	90	95	95	95	
		MODERN FIT		90	90	90	90	90	90				
		<b>SLIM FIT</b>		<b>90</b>	<b>90</b>	<b>90</b>	<b>90</b>	<b>90</b>					
5	Bündchenlänge cuff length	COMFORT FIT		26	26	26	28	28	28	30	30	30	
		MODERN FIT		26	26	26	28	28	28				
		<b>SLIM FIT</b>		<b>26</b>	<b>26</b>	<b>26</b>	<b>28</b>	<b>28</b>					
	SUPER SLIM	26	26	26	26	28							



# NOS-Modelle

NOS styles

SLIM  
FIT

Kragen- form  collar	Arm- länge  sleeves	Modell  style	Leiste  placket			Tasche  pocket		Saum  hemline		PATCHUNG Innensteg Kragen  mix&match inside collar stand	PATCHUNG Manschette  mix&match inside cuff	geteilter Kragensteg  half patch	PATCHUNG Passe  mix&match yoke	PATCHUNG Untertritt  mix&match inside placket	UMA  double cuff
			eingeschlagen	Biese	verdeckt	mit	ohne	gerade	rund						
			with fold	button facing	fly front	with	without	straight	round						
CLASSIC KENT	1/1	F140	✓				✓		✓		✓				
															
MODERN KENT	1/1	F18P	✓				✓		✓						
															
HAI   SHARK	1/1	F132	✓				✓		✓					✓	
															
	1/1	F142	✓				✓		✓						
	1/1	F182	✓				✓		✓						
	1/1	F392			✓		✓		✓						✓
	1/1	F482	✓				✓		✓						✓
	1/1	F94V	✓				✓		✓		✓				
KLÄPPCHEN   WING	1/1	F362			✓		✓		✓						✓
															



1100



**UNI POPELINE**

100% BAUMWOLLE | COTTON

F182 HAI | SHARK  
OHNE TASCHE | WITHOUT POCKET



8424



**UNI STRETCH**

97% BAUMWOLLE | COTTON,  
3% ELASTODIEN (XLA) | ELASTODIENE (XLA)

F18P MODERN KILT  
OHNE TASCHE | WITHOUT POCKET

F182 HAI | SHARK  
OHNE TASCHE | WITHOUT POCKET





8585



UNI STRETCH

97% BAUMWOLLE | COTTON,  
3% ELASTODIEN (XLA) | ELASTODIENE (XLA)  
F182 HAI | SHARK  
OHNE TASCHE | WITHOUT POCKET  
38-44

8585 / 8888



UNI STRETCH / CHAMBRAY STRETCH

97% BAUMWOLLE | COTTON,  
3% ELASTODIEN (XLA) | ELASTODIENE (XLA)  
F140 CLASSIC KENT  
OHNE TASCHE | WITHOUT POCKET  
38-44

	00 F182	  
	10 F182	  
	19 F182	  

	8585/00 F140	  
	8888/12 F140	  
	8888/32 F140	  
	8888/37 F140	  



8817

**B**

**TWILL**  
 100% BAUMWOLLE | COTTON  
 F182 HAI | SHARK  
 OHNE TASCHE | WITHOUT POCKET



8819

**B**

**TWILL**  
 100% BAUMWOLLE | COTTON  
 F142 HAI | SHARK  
 OHNE TASCHE | WITHOUT POCKET  
 38-44

**BLICKDICHT OPAQUE**

	00 F182	<b>XXL</b> 38-46	 NON IRON
	21 F182	38-44	 NON IRON
	10 F182	<b>XXL</b> 38-46	 NON IRON

**BLICKDICHT OPAQUE**

	00 F142	 NON IRON
	10 F142	 NON IRON



8819

**B**

TWILL

100% BAUMWOLLE | COTTON

F182 HAI | SHARK

OHNE TASCHE | WITHOUT POCKET

38-44



BLICKDICHT  
OPAQUE

00  
F182

NON IRON



Hemd:

ETERNA

Jetzt entdecken:  
**COVER SHIRT**

# PERFORMANCE SHIRT



FLEXIBEL WIE SPORTSWEAR.  
FÜR MAXIMALE FREIHEIT.

*Hemd:*

ET ER NA





3377

**B**

**PERFORMANCE SHIRT**

70% LYOCELL | LYOCELL  
 26% POLYAMID | POLYAMIDE  
 4% ELASTHAN | ELASTANE  
 F142 HAI | SHARK  
 OHNE TASCHKE | WITHOUT POCKET  
 38-44

3379

**B**

**PRINT STRETCH**

97% BAUMWOLLE | COTTON  
 3% ELASTOLEFIN | ELASTOLEFIN  
 F182 HAI | SHARK  
 OHNE TASCHKE | WITHOUT POCKET  
 38-44

SEASONAL\*

00  
F142

SUPER STRETCH

NON IRON

SEASONAL\*

12  
F142

SUPER STRETCH

NON IRON

SEASONAL\*

19  
F142

SUPER STRETCH

NON IRON

SEASONAL\*

19  
F182

STRETCH

EASY IRON

\*SEASONAL: solange Vorrat reicht | as long as stock lasts





3620

**B**

**NATTÉ**

100% BAUMWOLLE | COTTON  
 F94V HAI | SHARK  
 OHNE TASCHKE | WITHOUT POCKET  
 38-44



3947

**C**

**PRINT**

100% BAUMWOLLE | COTTON  
 F182 HAI | SHARK  
 OHNE TASCHKE | WITHOUT POCKET  
 38-44





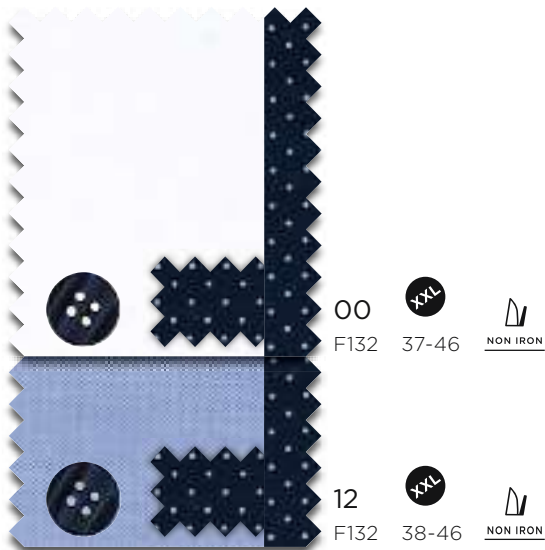
8100

**B**

**FEIN OXFORD**

100% BAUMWOLLE | COTTON

F132 HA | SHARK  
OHNE TASCHE | WITHOUT POCKET



8583 / 8889

**A**

**UNI STRETCH**

97% BAUMWOLLE | COTTON,  
3% ELASTODIEN (XLA) | ELASTODIENE (XLA)

F140 CLASSIC KENT  
OHNE TASCHE | WITHOUT POCKET  
38-44





3929

B

### LOTUS SHIRT TWILL

100% BAUMWOLLE | COTTON

F182 HAI | SHARK  
OHNE TASCHE | WITHOUT POCKET  
38-44



00  
F182



KEINE ANGST VOR  
FLECKEN!

SUPER  
DAD  
ODER  
SUPER  
CLEAN?



Hemd:

ETERNA

Mit innovativer Nano-Technologie:  
**LOTUS SHIRT**





3116



**STRUKTUR TWILL**

100% BAUMWOLLE | COTTON  
 F94V HAI | SHARK  
 OHNE TASCHE | WITHOUT POCKET  
 38-44



3116



**STRUKTUR TWILL**

100% BAUMWOLLE | COTTON  
 F142 HAI | SHARK  
 OHNE TASCHE | WITHOUT POCKET  
 38-44





8992



**STREIFEN TWILL**

100% BAUMWOLLE | COTTON  
F140 CLASSIC KENT  
OHNE TASCHE | WITHOUT POCKET  
38-44



16  
F140



8603



**STRUKTUR STRETCH**

98% BAUMWOLLE | COTTON,  
2% ELASTODIEN (XLA) | ELASTODIENE (XLA)  
F142 HAI | SHARK  
OHNE TASCHE | WITHOUT POCKET  
38-46



12  
F142







4671

**B**

**STRUKTUR**

100% BAUMWOLLE | COTTON

F142 HAI | SHARK

OHNE TASCHE | WITHOUT POCKET

38-44



11  
F142

  
NON IRON





# MODERN FIT

DIE REGULÄRE SCHNITTFÜHRUNG  
THE REGULAR FIT

1/1



1/2

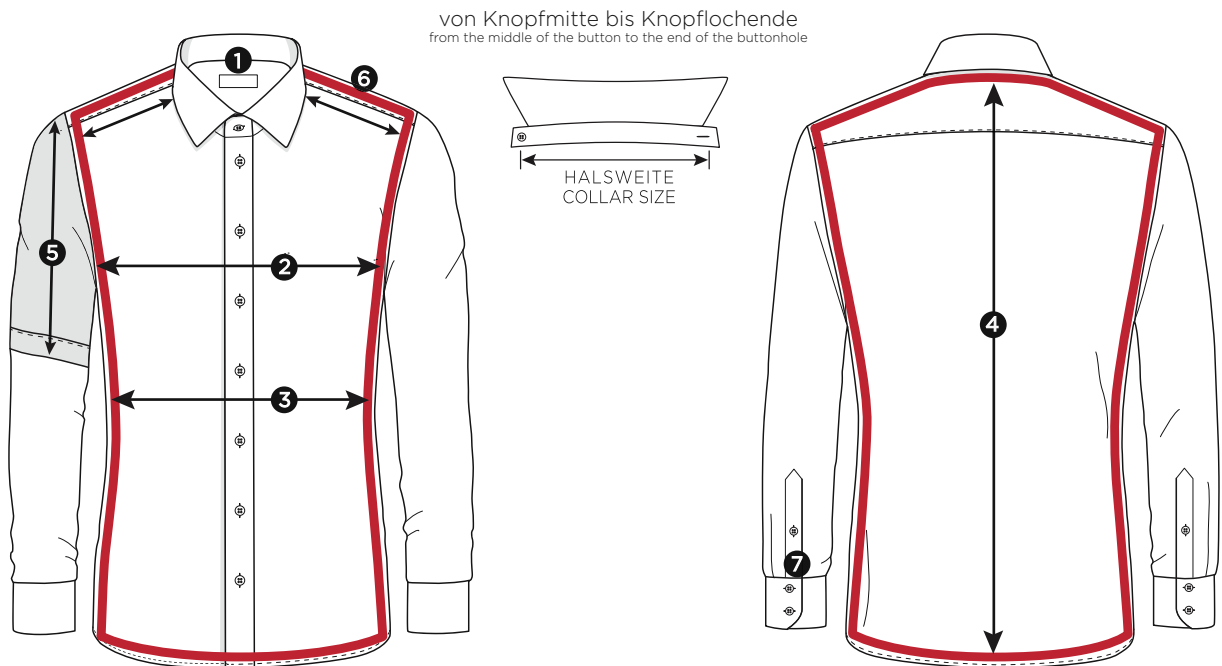


# Standard-Maßtabelle

standard measurement chart

MODERN  
FIT

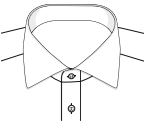
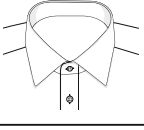
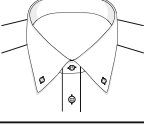
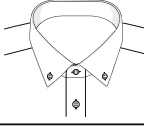
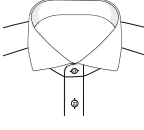
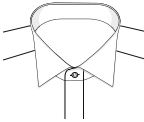
1	Halsweiten collar sizes	cm inch	36 14	37/38 14½/15	39/40 15½/15¾	41/42 16/16½	43/44 17/17½	45/46 17¾/18	47/48 18½/19	49/50 19¼/19½	52 20½	54 21¼	
2	Oberweite chest measurement	COMFORT FIT		112	120	128	134	148	154	160	168	176	
		<b>MODERN FIT</b>		<b>110</b>	<b>116</b>	<b>122</b>	<b>132</b>	<b>138</b>	<b>146</b>				
		SLIM FIT		102	110	116	124	134					
		SUPER SLIM	98	102	110	116	124						
3	Tailleweite waist measurement	COMFORT FIT		108	114	124	134	148	154	160	168	176	
		<b>MODERN FIT</b>		<b>102</b>	<b>106</b>	<b>114</b>	<b>122</b>	<b>130</b>	<b>138</b>				
		SLIM FIT		92	98	104	112	122					
		SUPER SLIM	79	83	89	95	103						
4	Rumpflänge bei ÄI 65 body length for SL 65	COMFORT FIT		80	80	80	82	90	90	95	95	95	
	<b>MODERN FIT</b>		<b>80</b>	<b>80</b>	<b>80</b>	<b>82</b>	<b>85</b>	<b>90</b>					
	SLIM FIT		80	80	80	80	80	80	80	80	80		
	SUPER SLIM		80	80	80	80	80	80	80	80	80		
	Rumpflänge bei ÄI 59 body length for SL 59	COMFORT FIT		80	80	80	80	80	80	80	80	80	
	<b>MODERN FIT</b>		<b>80</b>	<b>80</b>	<b>80</b>	<b>80</b>	<b>80</b>	<b>80</b>	<b>80</b>	<b>80</b>	<b>80</b>		
	SLIM FIT		85	85	85	85	90	90	95	95	95		
	SUPER SLIM		<b>85</b>	<b>85</b>	<b>85</b>	<b>85</b>	<b>90</b>	<b>90</b>					
	Rumpflänge bei ÄI 68 body length for SL 68	COMFORT FIT		85	85	85	85	90	90	95	95	95	
	<b>MODERN FIT</b>		<b>85</b>	<b>85</b>	<b>85</b>	<b>85</b>	<b>90</b>	<b>90</b>	<b>90</b>	<b>90</b>	<b>90</b>		
	SLIM FIT		90	90	90	90	90	90	95	95	95		
	SUPER SLIM		<b>90</b>	<b>90</b>	<b>90</b>	<b>90</b>	<b>90</b>	<b>90</b>					
5	Ärmellänge 1/2 short sleeve	COMFORT FIT		28	28	28	28	30	30	30	30	30	
		<b>MODERN FIT</b>		<b>27</b>	<b>27</b>	<b>27</b>	<b>28</b>	<b>30</b>	<b>30</b>				
		SLIM FIT		24	24	24	24	26					
		SUPER SLIM		24	24	24	24	26					
6	Bündchenlänge cuff length	COMFORT FIT		26	26	26	28	28	28	30	30	30	
		<b>MODERN FIT</b>		<b>26</b>	<b>26</b>	<b>26</b>	<b>28</b>	<b>28</b>	<b>28</b>				
		SLIM FIT		26	26	26	28	28					
		SUPER SLIM	26	26	26	26	28						



# NOS-Modelle

NOS styles

MODERN  
FIT

Kragen- form collar	Arm- länge sleeves	Modell style	Leiste placket			Tasche pocket		Saum hemline		PATCHUNG Innensteg Kragen mix&match inside collar stand	PATCHUNG Manschette mix&match inside cuff	geteilter Kragensteg half patch	PATCHUNG Passe mix&match yoke	PATCHUNG Untertritt mix&match inside placket	UMA double cuff
			einges- chlagen with fold	Biese button facing	ver- deckt fly front	mit with	ohne without	gerade straight	rund round						
CLASSIC KENT	1/2	C13K	✓			✓		✓	✓				✓		
	1/2	C187		✓		✓		✓							
	1/1	X13K	✓			✓		✓	✓	✓			✓		
	1/1	X157		✓		✓		✓	✓	✓					
	1/1	X177		✓			✓	✓							
	1/1	X187		✓		✓		✓							
	1/1	X18K	✓				✓		✓						
	1/1	X367			✓		✓	✓						✓	
	1/1	X94K	✓				✓		✓	✓	✓				
MODERN KENT	1/2	C14P	✓			✓		✓	✓						
	1/1	X14P	✓			✓		✓	✓	✓					
	1/1	X15P	✓			✓		✓	✓	✓					
	1/1	X94P	✓				✓	✓		✓	✓				
CLASSIC BUTTON- DOWN	1/1	X194		✓		✓		✓							
															
MODERN BUTTON- DOWN	1/1	X14U	✓			✓		✓	✓	✓					
															
HAI   SHARK	1/1	X15V	✓			✓		✓	✓	✓					
	1/1	X14V	✓			✓		✓	✓	✓					
	1/1	X17V	✓			✓		✓							
	1/1	X18V	✓			✓		✓							
	1/1	X48V	✓			✓		✓						✓	
KLÄPPCHEN   WING	1/1	X362			✓	✓	✓							✓	
															



8817

B

**TWILL**

100% BAUMWOLLE | COTTON  
 X18K CLASSIC KENT  
 OHNE TASCHE | WITHOUT POCKET  
 38-46, 48



8819

B

**TWILL**

100% BAUMWOLLE | COTTON  
 X15V HAI | SHARK  
 OHNE TASCHE | WITHOUT POCKET  
 38-46, 48

**BLICKDICHT OPAQUE**

	00 X18K	
	21 X18K	
	10 X18K	
	39 X18K	

**BLICKDICHT OPAQUE**

	00 X15V	
	10 X15V	



8819

**B**

**TWILL**

100% BAUMWOLLE | COTTON

X17V HAI | SHARK

OHNE TASCHE | WITHOUT POCKET

38-46, 48

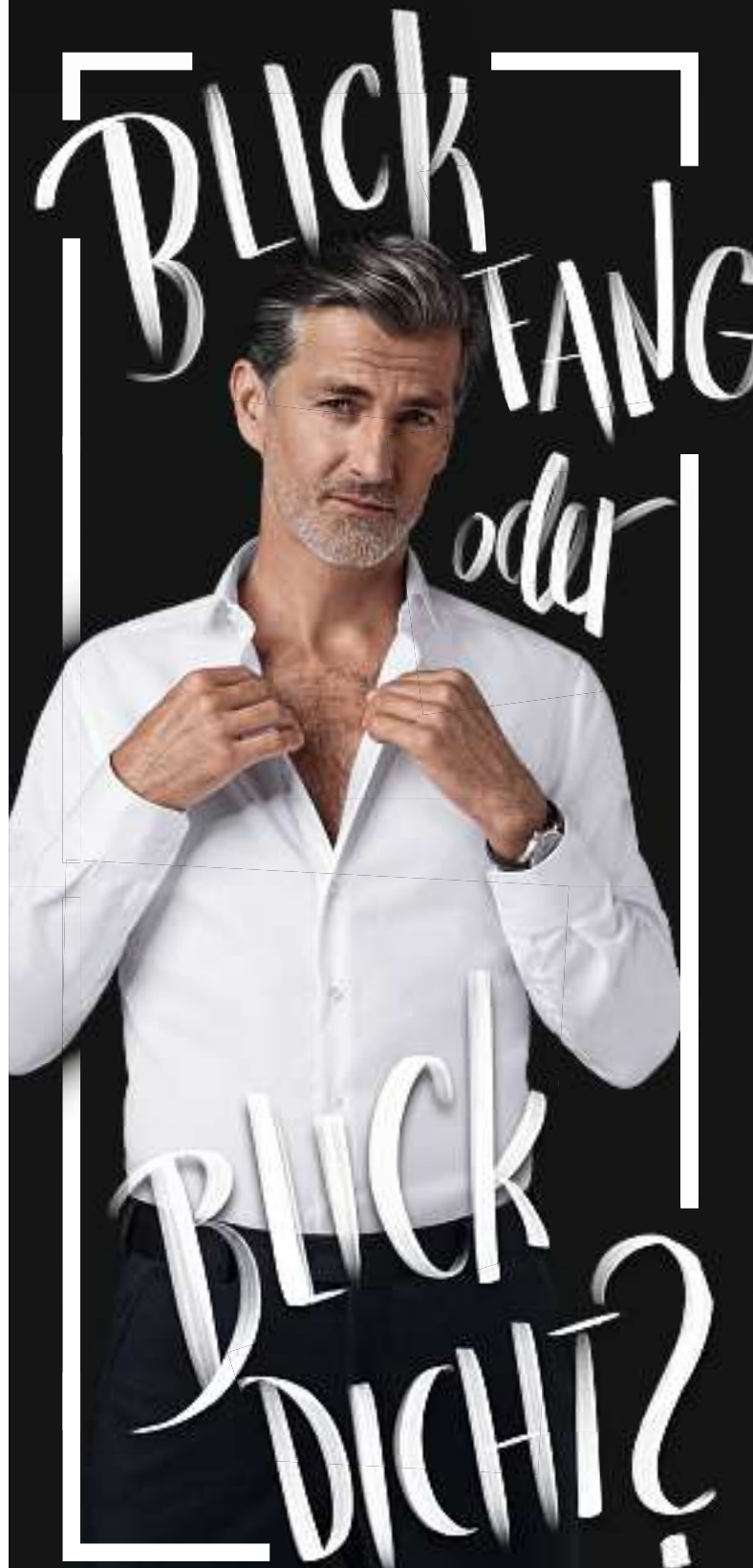


**BLICKDICHT  
OPAQUE**

00  
X17V



19  
X17V



*Hemd:*

**ETERNA**

Jetzt entdecken:  
**COVER SHIRT**



1100



**UNI POPELINE**

- 100% BAUMWOLLE | COTTON
- X177 CLASSIC KENT  
OHNE TASCHE | WITHOUT POCKET
- X187 CLASSIC KENT  
MIT TASCHE | WITH POCKET
- 37-46, 48

8100



**FEIN OXFORD**

- 100% BAUMWOLLE | COTTON
- X177 CLASSIC KENT  
OHNE TASCHE | WITHOUT POCKET
- X194 CLASSIC BUTTON DOWN  
MIT TASCHE | WITH POCKET
- 38-46, 48







8100

**B**

**FEIN OXFORD**

100% BAUMWOLLE | COTTON  
 X13K CLASSIC KENT  
 OHNE TASCHE | WITHOUT POCKET  
 38-46, 48



1300

**A**

**UNI POPELINE**

100% BAUMWOLLE | COTTON  
 X14V HAI | SHARK  
 MIT TASCHE | WITH POCKET  
 38-46, 48



\*SEASONAL: solange Vorrat reicht | as long as stock lasts

# SUPER DAD

ODER

# SUPER CLEAN?



LOTUS  
EFFECT

KEINE ANGST VOR  
FLECKEN!

Hemd:

# ETERNA

Mit innovativer Nano-Technologie:  
**LOTUS SHIRT**



3929

B

### LOTUS SHIRT TWILL

100% BAUMWOLLE | COTTON

X17V HAI | SHARK

OHNE TASCHE | WITHOUT POCKET

38-46, 48



00  
X17V



LOTUS  
EFFECT



NON IRON



8500

**A**

**CHAMBRAY**

100% BAUMWOLLE | COTTON

X157 CLASSIC KENT  
MIT TASCHE | WITH POCKET  
38-46, 48



3116

**B**

**TWILL STRUKTUR**

100% BAUMWOLLE | COTTON

X177 CLASSIC KENT  
OHNE TASCHE | WITHOUT POCKET  
38-46, 48



32  
X157



38  
X177





3116

**B**

**TWILL STRUKTUR**

100% BAUMWOLLE | COTTON  
 X14V HAI | SHARK  
 MIT TASCHE | WITH POCKET  
 38-46, 48



3381

**B**

**PRINT**

100% BAUMWOLLE | COTTON  
 X18V HAI | SHARK  
 MIT TASCHE | WITH POCKET  
 38-46, 48





3116



**TWILL STRUKTUR**

100% BAUMWOLLE | COTTON  
 X94P MODERN KENT  
 OHNE TASCHE | WITHOUT POCKET  
 38-46, 48

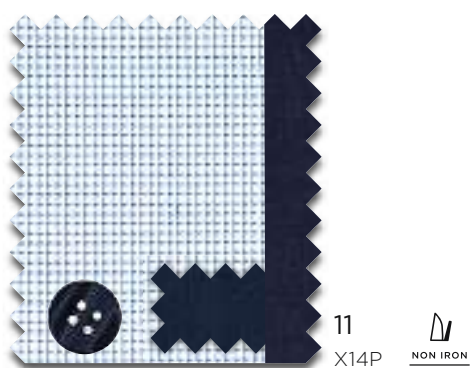
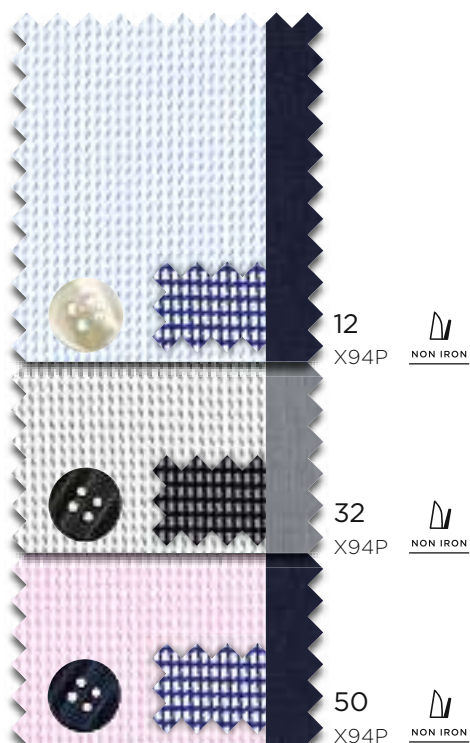


4671



**STRUKTUR**

100% BAUMWOLLE | COTTON  
 X14P MODERN KENT  
 OHNE TASCHE | WITHOUT POCKET  
 38-46, 48





8992



**STREIFEN TWILL**

100% BAUMWOLLE | COTTON

X14P MODERN KENT  
OHNE TASCHE | WITHOUT POCKET  
38-46, 48



8982



**STREIFEN TWILL**

100% BAUMWOLLE | COTTON

X15P MODERN KENT  
MIT TASCHE | WITH POCKET  
38-46, 48



16  
X14P



19  
X15P





3720

**B**

**KARO TWILL**

100% BAUMWOLLE | COTTON  
 X14U MODERN BUTTON-DOWN  
 MIT TASCHE | WITH POCKET  
 38-46, 48



12  
 X14U  NON IRON

17  
 X14U  NON IRON









3620

**B**

**NATTÉ**

100% BAUMWOLLE | COTTON  
 X94K CLASSIC KENT  
 OHNE TASCHE | WITHOUT POCKET  
 38-46, 48

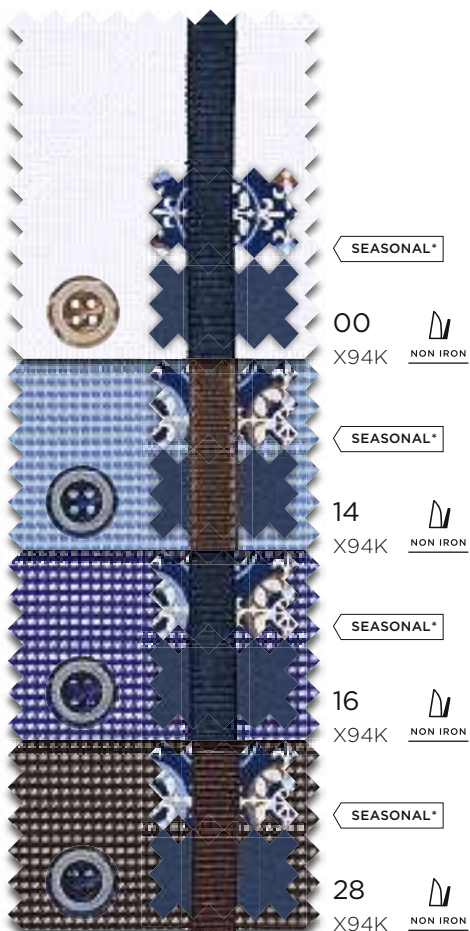


3947

**C**

**PRINT**

100% BAUMWOLLE | COTTON  
 X17V HAI | SHARK  
 OHNE TASCHE | WITHOUT POCKET  
 38-46, 48





1/2

1100

A

### UNI POPELINE

100% BAUMWOLLE | COTTON

C187 CLASSIC KENT  
MIT TASCHE | WITH POCKET  
37-46, 48



00  
C187

NON IRON

10  
C187

NON IRON

39  
C187

NON IRON



1/2



1/2

8100

B

**FEIN OXFORD**

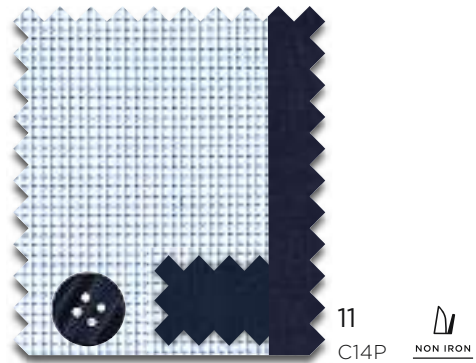
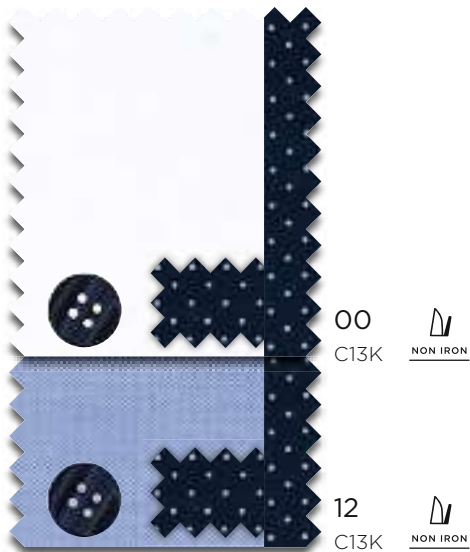
100% BAUMWOLLE | COTTON  
 C13K CLASSIC KENT  
 OHNE TASCHE | WITHOUT POCKET  
 38-46, 48

4671

B

**STRUKTUR**

100% BAUMWOLLE | COTTON  
 C14P MODERN KENT  
 OHNE TASCHE | WITHOUT POCKET  
 38-46, 48





# COMFORT FIT

---

DIE BEQUEME SCHNITTFÜHRUNG  
THE COMFORTABLE FIT

1/1



1/2



# Standard-Maßtabelle

## standard measurement chart

COMFORT  
FIT

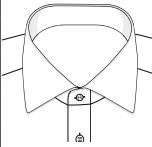
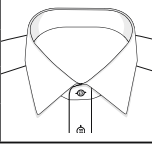
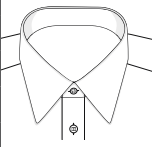
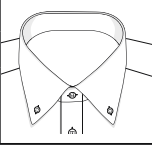
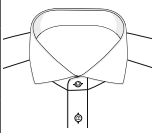
1	Halsweiten collar sizes	cm inch	36 14	37/38 14½/15	39/40 15½/15¾	41/42 16/16½	43/44 17/17½	45/46 17¾/18	47/48 18½/19	49/50 19¼/19½	52 20½	54 21¼
2	Oberweite chest measurement	<b>COMFORT FIT</b>		<b>112</b>	<b>120</b>	<b>128</b>	<b>134</b>	<b>148</b>	<b>154</b>	<b>160</b>	<b>168</b>	<b>176</b>
		MODERN FIT		110	116	122	132	138	146			
		SLIM FIT		102	110	116	124	134				
		SUPER SLIM	98	102	110	116	124					
3	Tailllenweite waist measurement	<b>COMFORT FIT</b>		<b>108</b>	<b>114</b>	<b>124</b>	<b>134</b>	<b>148</b>	<b>154</b>	<b>160</b>	<b>168</b>	<b>176</b>
		MODERN FIT		102	106	114	122	130	138			
		SLIM FIT		92	98	104	112	122				
		SUPER SLIM	79	83	89	95	103					
4	Rumpflänge bei ÄI 65 body length for SL 65	<b>COMFORT FIT</b>		<b>80</b>	<b>80</b>	<b>80</b>	<b>82</b>	<b>90</b>	<b>90</b>	<b>95</b>	<b>95</b>	<b>95</b>
	MODERN FIT		80	80	80	82	85	90				
	Rumpflänge bei ÄI 59 body length for SL 59	<b>COMFORT FIT</b>		<b>80</b>	<b>80</b>	<b>80</b>	<b>80</b>	<b>80</b>	<b>80</b>	<b>80</b>	<b>80</b>	<b>80</b>
	MODERN FIT		80	80	80	80	80	80				
4	Rumpflänge bei ÄI 68 body length for SL 68	<b>COMFORT FIT</b>		<b>85</b>	<b>85</b>	<b>85</b>	<b>85</b>	<b>90</b>	<b>90</b>	<b>95</b>	<b>95</b>	<b>95</b>
	MODERN FIT		85	85	85	85	90	90				
4	Rumpflänge bei ÄI 72 body length for SL 72	<b>COMFORT FIT</b>		<b>90</b>	<b>90</b>	<b>90</b>	<b>90</b>	<b>90</b>	<b>90</b>	<b>95</b>	<b>95</b>	<b>95</b>
	MODERN FIT SLIM FIT		90 90	90 90	90 90	90 90	90 90	90 90				
5	Ärmellänge 1/2 short sleeve	<b>COMFORT FIT</b>		<b>28</b>	<b>28</b>	<b>28</b>	<b>28</b>	<b>30</b>	<b>30</b>	<b>30</b>	<b>30</b>	<b>30</b>
		MODERN FIT		27	27	27	28	30	30			
		SLIM FIT		24	24	24	24	26				
6	Bündchenlänge cuff length	<b>COMFORT FIT</b>		<b>26</b>	<b>26</b>	<b>26</b>	<b>28</b>	<b>28</b>	<b>28</b>	<b>30</b>	<b>30</b>	<b>30</b>
		MODERN FIT		26	26	26	28	28	28			
		SLIM FIT		26	26	26	28	28				
		SUPER SLIM	26	26	26	26	28					



# NOS-Modelle

NOS styles

COMFORT  
FIT

Kragen- form  collar	Arm- länge  sleeves	Modell  style	Leiste  placket			Tasche  pocket		Saum  hemline		PATCHUNG Innensteg Kragen  mix&match inside collar stand	PATCHUNG Manschette  mix&match inside cuff	geteilter Kragensteg  half patch	PATCHUNG Passe  mix&match yoke	PATCHUNG Untertritt  mix&match inside placket	UMA  double cuff
			eingeschlagen	Biese	verdeckt	mit	ohne	gerade	rund						
			with fold	button facing	fly front	with	without	straight	round						
	1/1	E137		✓		✓		✓		✓				✓	
	1/1	E147		✓		✓		✓		✓					
	1/1	E15K	✓			✓		✓		✓					
	1/1	E187		✓		✓		✓							
	1/1	E19K	✓			✓			✓						
	1/1	E387			✓		✓	✓							✓
	1/1	E95K	✓			✓		✓		✓		✓			
	1/2	K147		✓		✓		✓		✓					
MODERN KENT	1/1	E15P		✓		✓		✓		✓					
															
BASIC KENT	1/1	E148		✓		✓		✓		✓					
	1/1	E198		✓		✓		✓							
	1/1	E49E	✓				✓	✓							✓
	1/2	K198		✓		✓		✓							
CLASSIC B. D.	1/1	E194		✓		✓		✓							
	1/1	E144		✓		✓		✓		✓					
	1/1	E14L	✓			✓		✓		✓					
HAI   SHARK	1/1	E14V	✓			✓			✓						
	1/1	E15V	✓				✓		✓						
	1/1	E18V	✓			✓			✓						

# BLICK FANG

oder



# BLICK DICHT?

Hemd:

# ETERNA

Jetzt entdecken:  
**COVER SHIRT**



8817

**B**

TWILL

100% BAUMWOLLE | COTTON

E19K CLASSIC KENT  
MIT TASCHE | WITH POCKET

**BLICKDICHT  
OPAQUE**



00

E19K

xxl

40-50,  
52, 54

NON IRON



10

E19K

xxl

40-50,  
52, 54

NON IRON



39

E19K

NON IRON

40-48





8819



**TWILL**

100% BAUMWOLLE | COTTON  
 E15V HAI | SHARK  
 OHNE TASCHE | WITHOUT POCKET  
 40-48

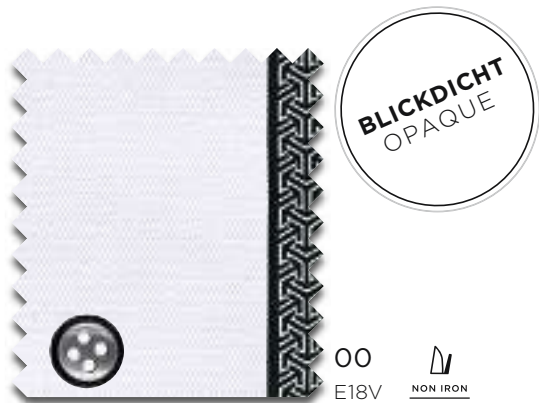


8819



**UNI TWILL**

100% BAUMWOLLE | COTTON  
 E18V HAI | SHARK  
 MIT TASCHE | WITH POCKET  
 40-48





1100



UNI POPELINE

100% BAUMWOLLE | COTTON

E187 CLASSIC KENT  
MIT TASCHE | WITH POCKET

E198 BASIC KENT  
MIT TASCHE | WITH POCKET



8100



FEIN OXFORD

100% BAUMWOLLE | COTTON

E187 CLASSIC KENT  
MIT TASCHE | WITH POCKET

E194 CLASSIC BUTTON DOWN  
MIT TASCHE | WITH POCKET



00

E187 38-50,  
52, 54  
E198 38-50,  
52, 54



10

E187 39-50,  
52, 54  
E198 40-50



39

E187 40-50,  
52, 54  
E198 40-50,  
52, 54



00

E194 40-50,  
52, 54



12

E187 40-48  
E194 40-50,  
52, 54





8100

**B**

**FEIN OXFORD**

100% BAUMWOLLE | COTTON

E137 CLASSIC KENT  
MIT TASCHE | WITH POCKET

40-50, 52, 54

**XXL**



00

E137

  
NON IRON

12

E137

  
NON IRON







1300

A

UNI POPELINE

100% BAUMWOLLE | COTTON  
 E14V HAI | SHARK  
 MIT TASCHE | WITH POCKET  
 40-48



3381

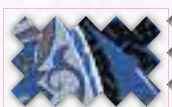
B

PRINT

100% BAUMWOLLE | COTTON  
 E18V HAI | SHARK  
 MIT TASCHE | WITH POCKET  
 40-48



SEASONAL\*



00  
 E14V NON IRON



15  
 E14V NON IRON



SEASONAL\*



18  
 E18V EASY IRON





3620

**B**

**NATTÉ**

100% BAUMWOLLE | COTTON  
 E95K CLASSIC KENT  
 MIT TASCHE | WITH POCKET  
 40-48



3116

**B**

**TWILL STRUKTUR**

100% BAUMWOLLE | COTTON  
 E14V HAI | SHARK  
 MIT TASCHE | WITH POCKET  
 40-48





4671



**STRUKTUR**

100% BAUMWOLLE | COTTON

E147 CLASSIC KENT  
MIT TASCHE | WITH POCKET  
40-50, 52, 54



11

E147



3116



**TWILL STRUKTUR**

100% BAUMWOLLE | COTTON

E95K CLASSIC KENT  
MIT TASCHE | WITH POCKET

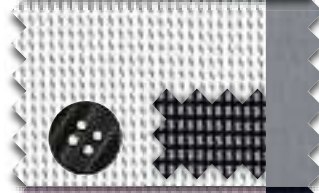


12

E95K



40-50,  
52, 54

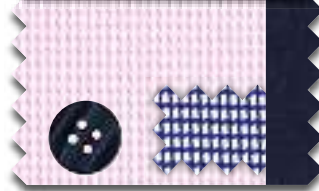


32

E95K



40-50,  
52, 54



50

E95K

40-48





3720

**B**

**KARO TWILL**

100% BAUMWOLLE | COTTON

E14L CLASSIC BUTTON DOWN  
MIT TASCHE | WITH POCKET  
40-48



8914

**A**

**KARO POPELINE**

100% BAUMWOLLE | COTTON

E144 CLASSIC BUTTON DOWN  
MIT TASCHE | WITH POCKET  
40-48



12  
E14L 

17  
E14L 



SEASONAL\*

57  
E144 





8982



**STREIFEN TWILL**

100% BAUMWOLLE | COTTON

E15K CLASSIC KENT  
MIT TASCHE | WITH POCKET  
40-50, 52, 54



8992



**STREIFEN TWILL**

100% BAUMWOLLE | COTTON

E15P MODERN KENT  
MIT TASCHE | WITH POCKET  
40-50, 52, 54



19

E15K



16

E15P





8500

A

CHAMBRAY

100% BAUMWOLLE | COTTON

E148 BASIC KENT  
MIT TASCHE | WITH POCKET  
40-50, 52, 54



32  
E148



3116

B

TWILL STRUKTUR

100% BAUMWOLLE | COTTON

E187 CLASSIC KENT  
MIT TASCHE | WITH POCKET  
40-48



38  
E187





1/2



1/2

1/2 COMFORT FIT

1100

A

**UNI POPELINE**

100% BAUMWOLLE | COTTON

K198 BASIC KENT  
MIT TASCHE | WITH POCKET  
39-50, 52, 54



4671

B

**STRUKTUR**

100% BAUMWOLLE | COTTON

K147 CLASSIC KENT  
MIT TASCHE | WITH POCKET  
40-50, 52, 54



00  
K198



10  
K198



39  
K198



11  
K147





1863  
— by —  
ETERNA

1863 BY ETERNA



UNSERE HOCHWERTIGEN HEMDEN DER PREMIUMLINIE 1863 BY ETERNA  
WERDEN DURCH CO<sub>2</sub>-KOMPENSATION KLIMANEUTRAL PRODUZIERT.

OUR HIGH-QUALITY SHIRTS OF THE PREMIUM LINE 1863 BY ETERNA ARE  
PRODUCED CARBON NEUTRAL THROUGH CO<sub>2</sub> COMPENSATION.

# Standard-Maßtabelle

standard measurement chart

MODERN  
FIT

SLIM  
FIT

1	Halsweiten collar sizes	cm inch	36 14	37/38 14½/15	39/40 15½/15¾	41/42 16/16½	43/44 17/17½	45/46 17¾/18	47/48 18½/19	49/50 19¼/19½	52 20½	54 21¼
2	Oberweite chest measurement	COMFORT FIT <b>MODERN FIT</b> SLIM FIT		112 <b>110</b> 102	120 <b>116</b> 110	128 <b>122</b> 116	134 <b>132</b> 124	148 <b>138</b> 134	154 <b>146</b>	160	168	176
3	Taillenweite waist measurement	COMFORT FIT <b>MODERN FIT</b> SLIM FIT		108 <b>102</b> 92	114 <b>106</b> 98	124 <b>114</b> 104	134 <b>122</b> 112	148 <b>130</b> 122	154 <b>138</b>	160	168	176
4	Rumpflänge body length for SL 65 Rumpflänge bei Äl 67 body length for SL 65	COMFORT FIT <b>MODERN FIT</b> SLIM FIT		80 <b>80</b> 80	80 <b>80</b> 80	80 <b>80</b> 80	82 <b>82</b> 82	90 <b>85</b> 85	90 <b>90</b>	95	95	95
5	Bündchenlänge cuff length	COMFORT FIT <b>MODERN FIT</b> SLIM FIT		26 <b>26</b> 26	26 <b>26</b> 26	26 <b>26</b> 26	28 <b>28</b> 28	28 <b>28</b> 28	28 <b>28</b>	30	30	30




# NOS-Modelle

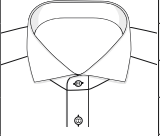
NOS styles

MODERN  
FIT

SLIM  
FIT

Kragen- form  collar	Arm- länge  sleeves	Modell  style	Leiste  placket			Tasche  pocket		Saum  hemline		PATCHUNG Innensteg Kragen  mix&match inside collar stand	PATCHUNG Manschette  mix&match inside cuff	geteilter Kragensteg  half patch	PATCHUNG Passe  mix&match yoke	PATCHUNG Untertritt  mix&match inside placket	UMA  double cuff
			eingeschlagen	Biese	verdeckt	mit	ohne	gerade	rund						
			with fold	button facing	fly front	with	without	straight	round						

CLASSIC KENT	1/1	■X687	✓				✓		✓						
															

HAI   SHARK	1/1	■X66V	✓				✓		✓		✓	✓			
	1/1	■F66V	✓				✓		✓		✓	✓			
	1/1	■X682	✓				✓		✓						
	1/1	■F682	✓				✓		✓						








8005

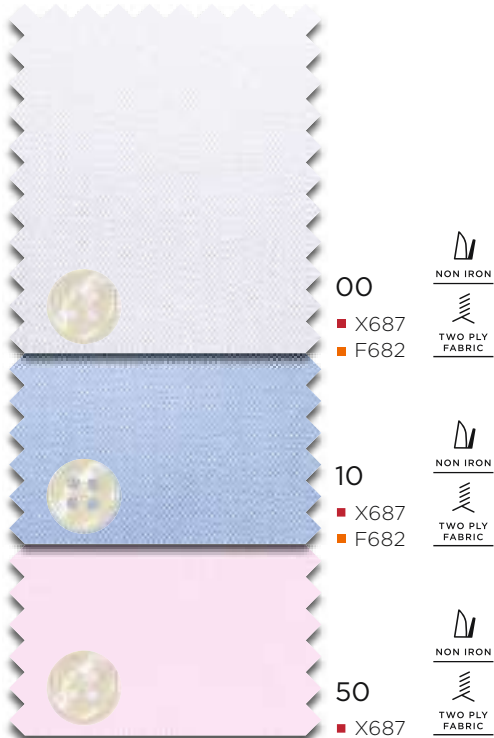


UNI TWILL

100% BAUMWOLLE | COTTON

X687 CLASSIC KENT - MODERN FIT  
OHNE TASCHKE | WITHOUT POCKET  
38-46, 48

F682 HAI | SHARK - SLIM FIT  
OHNE TASCHKE | WITHOUT POCKET   
38-46



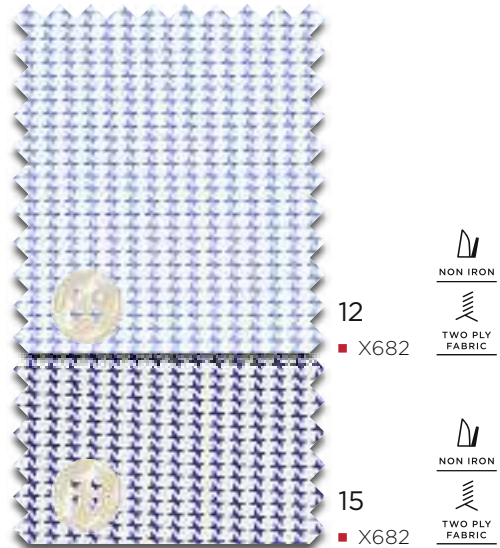
3747

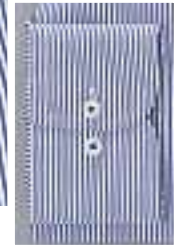


STRUKTUR

100% BAUMWOLLE | COTTON

X682 HAI | SHARK - MODERN FIT  
OHNE TASCHKE | WITHOUT POCKET  
38-46, 48





3961

CO<sub>2</sub>  
NEUTRAL



### STREIFEN TWILL

100% BAUMWOLLE | COTTON

X682 HAI | SHARK - MODERN FIT  
OHNE TASCHE | WITHOUT POCKET  
39-46, 48

F682 HAI | SHARK - SLIM FIT  
OHNE TASCHE | WITHOUT POCKET  
38-44



16

■ X682  
■ F682





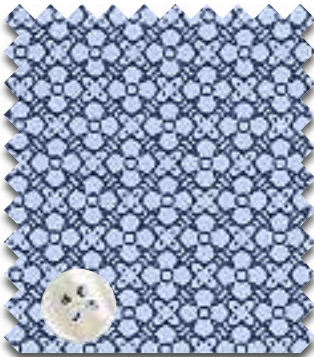
3968

CO<sub>2</sub> NEUTRAL **D**

PRINT

100% BAUMWOLLE | COTTON

X682 HAI | SHARK - MODERN FIT  
OHNE TASCHE | WITHOUT POCKET  
39-46, 48



18

■ X682



3960

CO<sub>2</sub> NEUTRAL **D**

STRUKTUR

100% BAUMWOLLE | COTTON

X66V HAI | SHARK - MODERN FIT  
OHNE TASCHE | WITHOUT POCKET  
39-46, 48

F66V HAI | SHARK - SLIM FIT  
OHNE TASCHE | WITHOUT POCKET  
38-44



00

■ X66V  
■ F66V

12

■ X66V  
■ F66V







# Standard-Maßtabelle

standard measurement chart

MODERN  
FIT

SLIM  
FIT

1	Halsweiten collar sizes	cm inch	36 14	37/38 14½/15	39/40 15½/15¾	41/42 16/16½	43/44 17/17½	45/46 17¾/18	47/48 18½/19	49/50 19¼/19½	52 20½	54 21¼
2	Oberweite chest measurement	<b>MODERN FIT</b> <b>SLIM FIT</b>		<b>110</b> <b>102</b>	<b>116</b> <b>110</b>	<b>122</b> <b>116</b>	<b>132</b> <b>124</b>	<b>138</b> <b>134</b>	<b>146</b>			
3	Taillenweite waist measurement	<b>MODERN FIT</b> <b>SLIM FIT</b>		<b>102</b> <b>92</b>	<b>106</b> <b>98</b>	<b>114</b> <b>104</b>	<b>122</b> <b>112</b>	<b>130</b> <b>122</b>	<b>138</b>			1
4	Rumpflänge body length for SL 65 Rumpflänge bei Äl 67 body length for SL 65	<b>MODERN FIT</b> <b>SLIM FIT</b>		<b>77</b> <b>75</b>	<b>77</b> <b>76</b>	<b>78</b> <b>77</b>	<b>80</b> <b>79</b>	<b>83</b> <b>81</b>	<b>87</b>			
5	Bündchenlänge cuff length	<b>MODERN FIT</b> <b>SLIM FIT</b>		<b>26</b> <b>26</b>	<b>26</b> <b>26</b>	<b>26</b> <b>26</b>	<b>28</b> <b>28</b>	<b>28</b> <b>28</b>	<b>28</b>			

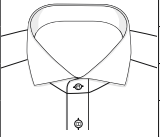


# NOS-Modelle

NOS styles

MODERN  
FIT

SLIM  
FIT

Kragen- form  collar	Arm- länge  sleeves	Modell  style	Leiste  placket			Tasche  pocket		Saum  hemline		PATCHUNG Innensteg Kragen  mix&match inside collar stand	PATCHUNG Manschette  mix&match inside cuff	geteilter Kragensteg  half patch	PATCHUNG Passe  mix&match yoke	PATCHUNG Untertritt  mix&match inside placket	UMA  double cuff
			eingeschlagen	Biese	verdeckt	mit	ohne	gerade	rund						
			with fold	button facing	fly front	with	without	straight	round						
HAI   SHARK	1/1	■XS82	✓				✓		✓						
	1/1	■FS82	✓				✓		✓						







3850

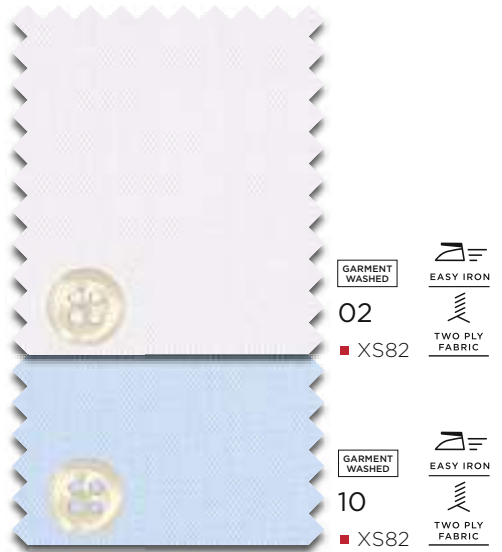
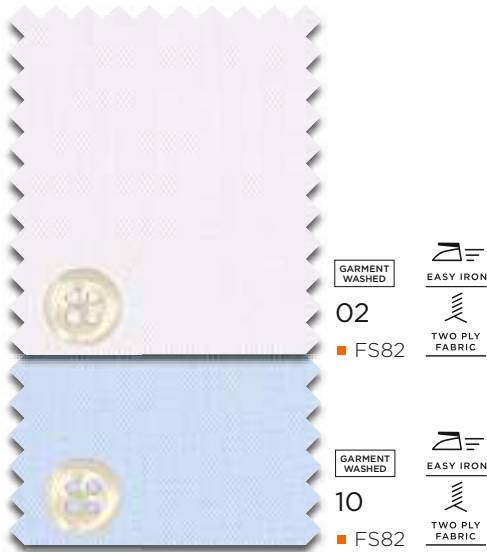


UNI TWILL  
 100% BAUMWOLLE | COTTON  
 FS82 HAI | SHARK - SLIM FIT  
 OHNE TASCHE | WITHOUT POCKET  
 38-44

3850



UNI TWILL  
 100% BAUMWOLLE | COTTON  
 XS82 HAI | SHARK - MODERN FIT  
 OHNE TASCHE | WITHOUT POCKET  
 38-46, 48







2357



**STREIFEN STRETCH**  
 100% BAUMWOLLE | COTTON  
 FS82 HAI | SHARK - SLIM FIT  
 OHNE TASCHE | WITHOUT POCKET  
 38-44



2391



**KARO TWILL**  
 100% BAUMWOLLE | COTTON  
 FS82 HAI | SHARK - SLIM FIT  
 OHNE TASCHE | WITHOUT POCKET  
 38-44

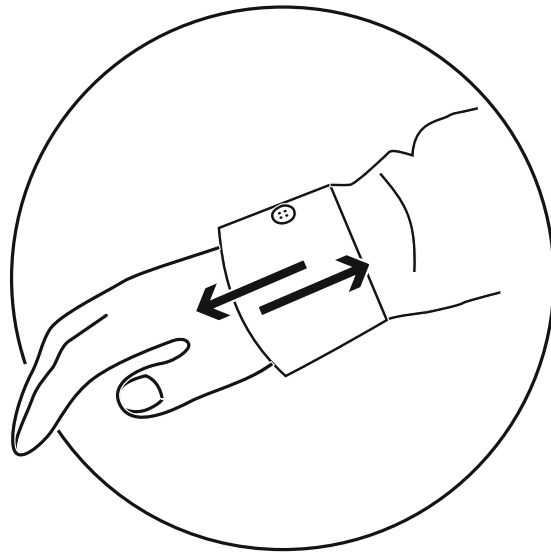




# ÄRMELLÄNGEN

---

SLEEVE LENGTHS



59 Ärmellänge  
sleeve length

68 Ärmellänge  
sleeve length

COMFORT  
FIT

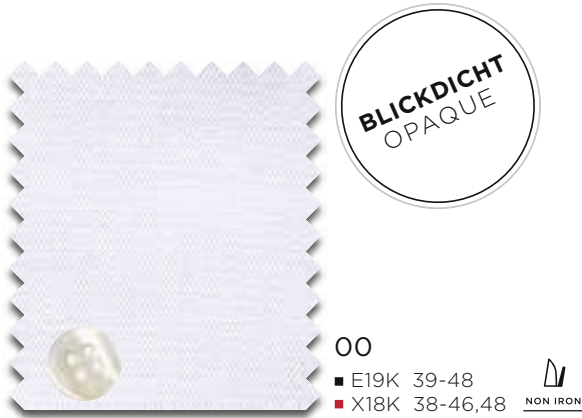
MODERN  
FIT

8817

B

TWILL

100% BAUMWOLLE | COTTON  
E19K CLASSIC KENT  
MIT TASCHE | WITH POCKET  
X18K CLASSIC KENT  
OHNE TASCHE | WITHOUT POCKET



8817

B

TWILL

100% BAUMWOLLE | COTTON  
E19K CLASSIC KENT  
MIT TASCHE | WITH POCKET  
X18K CLASSIC KENT  
OHNE TASCHE | WITHOUT POCKET

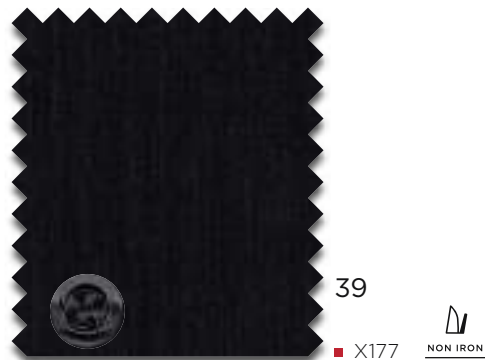


1100

A

UNI POPELINE

100% BAUMWOLLE | COTTON  
X177 CLASSIC KENT  
OHNE TASCHE | WITHOUT POCKET  
38-46,48

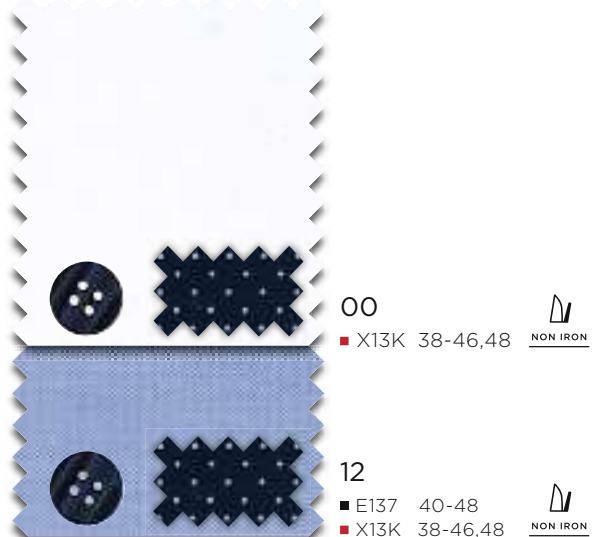


8100

B

FEIN OXFORD

100% BAUMWOLLE | COTTON  
E137 CLASSIC KENT  
MIT TASCHE | WITH POCKET  
X13K OHNE TASCHE | WITHOUT POCKET



3116

B

**TWILL STRUKTUR**

100% BAUMWOLLE | COTTON  
X14V HAI | SHARK  
MIT TASCHE | WITH POCKET  
40-46, 48

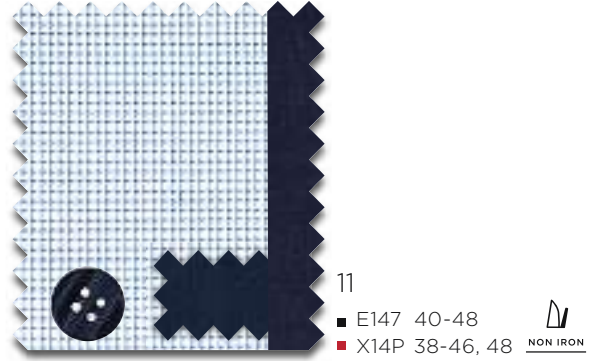


4671

B

**STRUKTUR**

100% BAUMWOLLE | COTTON  
E147 CLASSIC KENT  
MIT TASCHE | WITH POCKET  
X14P MODERN KENT  
OHNE TASCHE | WITHOUT POCKET

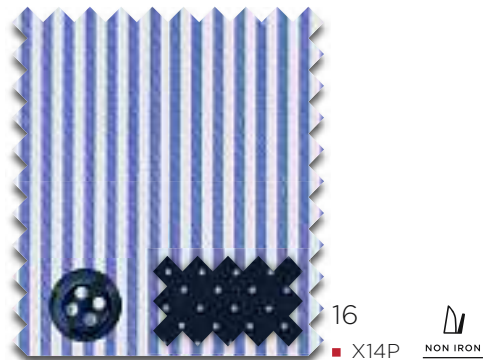


8992

A

**STREIFEN TWILL**

100% BAUMWOLLE | COTTON  
X14P MODERN KENT  
OHNE TASCHE | WITHOUT POCKET  
40-46, 48

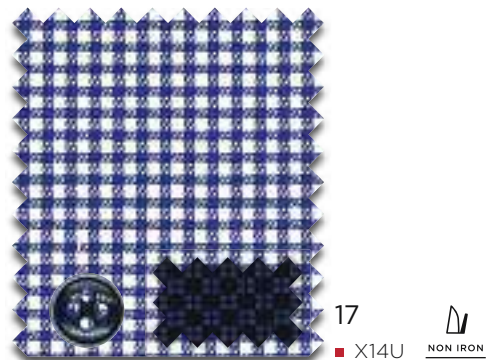


3720

B

**TWILL KARO**

100% BAUMWOLLE | COTTON  
X14U MODERN BUTTON DOWN  
MIT TASCHE | WITH POCKET  
40-46, 48







8603

A

**STRUKTUR STRETCH**

98% BAUMWOLLE | COTTON,  
2% ELASTODIEN (XLA) | ELASTODIENE (XLA)  
F142 HAI | SHARK  
OHNE TASCHE | WITHOUT POCKET  
38-46

XXL



12

■ F142



8817

B

**TWILL**

100% BAUMWOLLE | COTTON  
E19K CLASSIC KENT  
MIT TASCHE | WITH POCKET  
X18K CLASSIC KENT  
OHNE TASCHE | WITHOUT POCKET  
F182 HAI | SHARK  
OHNE TASCHE | WITHOUT POCKET

XXL



**BLICKDICHT  
OPAQUE**

00

■ E19K 40-48

■ X18K 38-46, 48

■ F182 38-46



21

■ F182 38-46



10

■ X18K 38-46, 48

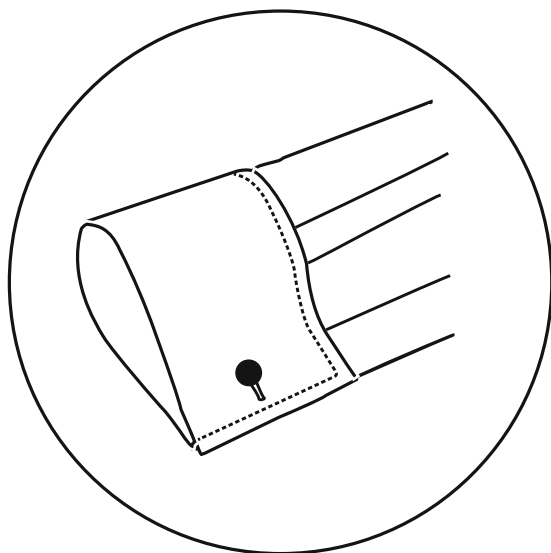




# GALA UMSCHLAGMANSCHETTE

---

DRESS SHIRTS | DOUBLE CUFF





8817



**TWILL**

100% BAUMWOLLE | COTTON  
VERDECKTE KNOPFLEISTE/FLYFRONT/GORGE CACHÉE

- E387 CLASSIC KENT  
OHNE TASCHE | WITHOUT POCKET
- X362 KLÄPPCHEN | WING  
OHNE TASCHE | WITHOUT POCKET
- X367 CLASSIC KENT  
OHNE TASCHE | WITHOUT POCKET
- F362 KLÄPPCHEN | WING  
OHNE TASCHE | WITHOUT POCKET
- F392 HAI | SHARK  
OHNE TASCHE | WITHOUT POCKET

8817



**TWILL**

100% BAUMWOLLE | COTTON  
VERDECKTE KNOPFLEISTE/FLYFRONT/GORGE CACHÉE

- X362 KLÄPPCHEN | WING  
OHNE TASCHE | WITHOUT POCKET
- X367 CLASSIC KENT  
OHNE TASCHE | WITHOUT POCKET
- F362 KLÄPPCHEN | WING  
OHNE TASCHE | WITHOUT POCKET
- F392 HAI | SHARK  
OHNE TASCHE | WITHOUT POCKET

**00**

- E387 40-50, 52, 54
- X362 38-46, 48
- X367 38-46, 48
- X367
- ÄL68 38-46, 48
- F362 37-44
- F392 37-44

**21**

- X362 38-46, 48
- X367 38-46, 48
- X367
- ÄL68 38-46, 48
- F362 37-44
- F392 37-44

# UMA

double cuff

COMFORT  
FIT

MODERN  
FIT

SLIM  
FIT



8817



## TWILL

100% BAUMWOLLE | COTTON  
UMSCHLAGMANSCHETTE | DOUBLE CUFF  
E49E BASIC KENT  
OHNE TASCHE | WITHOUT POCKET  
X48V HAI | SHARK  
OHNE TASCHE | WITHOUT POCKET  
F482 HAI | SHARK  
OHNE TASCHE | WITHOUT POCKET



BLICKDICHT  
OPAQUE

00

XXL

- E49E 40-50, 52, 54
- X48V 38-46,48
- F482 38-44

NON IRON

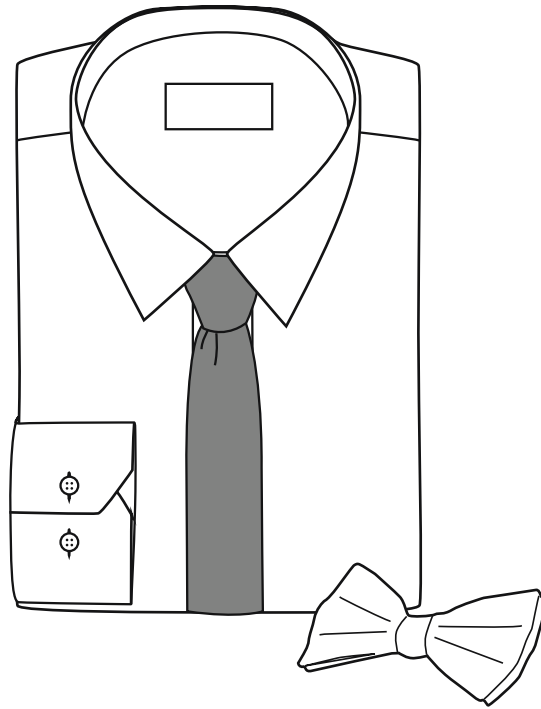


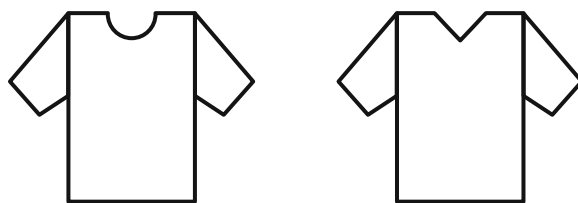


# ACCESSOIRES

---

ACCESSORIES





BODYSHIRT



# Bodywear

bodywear



Superfeine Qualität mit 8% Elasthan-Anteil und 92% Baumwolle. Das Bodyshirt ist sehr weich und anschmiegsam, trägt sich wie eine zweite Haut.  
 Extra fine quality with 8% elastane and 92% cotton. The bodyshirt is very smooth and close-fitting, it feels like a second skin.

4	5	6	7	8
S	M	L	XL	XXL

Artikel/art.: 800/00+39 (V-Ausschnitt/v-neck)  
 801/00+39 (Rundhals/round neck)  
 804/00 (tieferer V-Ausschnitt/extended v-neck)

Größe/size: 4 - 8



00



39

# Socken

socks



Artikel/art.: 600  
 Größe/size: 39 - 42 / 43 - 46 / 47 - 48  
 Farbe/colour: 39/35/19

Qualität/quality:  
 98% Baumwolle/98% cotton  
 2% Elasthan/2% elastane

# Gürtel

belts

Längen 90-110 cm (in 5 cm Schritten) verfügbar | Lengths 90-110 cm available (in 5 cm increments)



653/19  
32 mm

69% POLYPROPYLEN | POLYPROPYLENE  
31% LATEX



653/22  
32 mm

69% POLYPROPYLEN | POLYPROPYLENE  
31% LATEX



650/39 WENDEGÜRTEL  
REVERSIBLE BELT  
32 mm

100% RINDSLEDER | COWHIDE



651/29  
30 mm

100% RINDSLEDER | COWHIDE



651/39  
30 mm

100% RINDSLEDER | COWHIDE

# Manschettenknöpfe | Krawattennadeln

cuff links | tie pins



141/00



120/00



142/00



144/00



137/19



143/00



138/00



106/00



102/00



# Schleife

bow tie

100% Seide | silk



9970/00



9970/50



9970/19



9970/39

# Einstecktuch

pocket handkerchief

100% Baumwolle | cotton



200/00

# Krawatte

tie

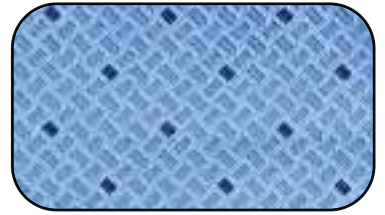
100 % Seide | silk **6 cm**



9029/10



9463/18



9470/10



9029/15



9463/58



9470/18



9029/19



9470/55



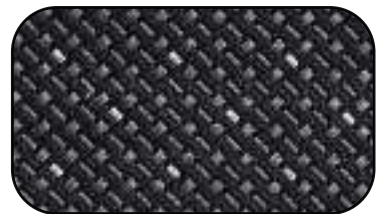
9029/55



9470/59



9029/58



9470/39



9029/35

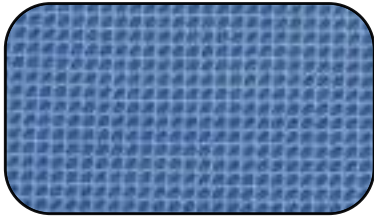


9029/39

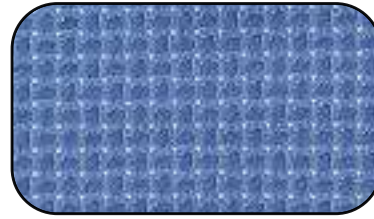
# Krawatte

tie

100% Seide | silk **6 cm**



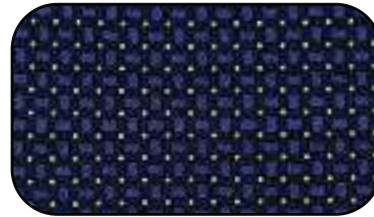
9068/10



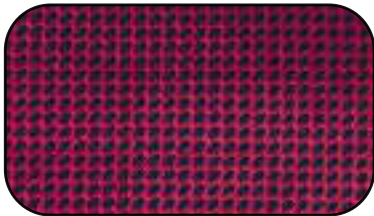
9069/10



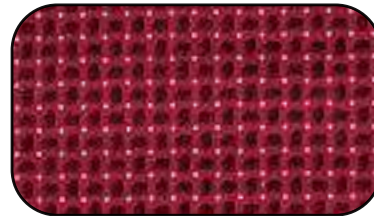
9068/19



9069/19



9068/55



9069/55



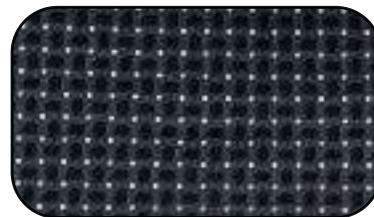
9068/58



9069/58



9068/39



9069/39

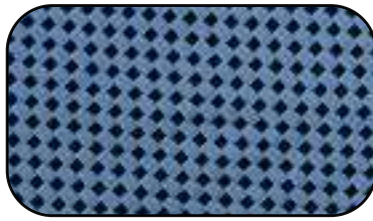
# Krawatte

tie

100 % Seide | silk **7,5 cm**



9024/10



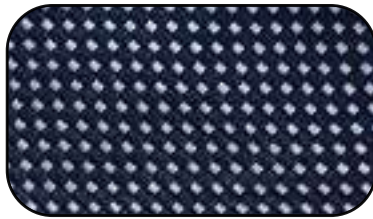
9722/10



9729/10



9024/19



9722/17



9729/15



9024/55



9722/19



9729/19



9024/58



9722/55



9729/55



9024/39



9722/51



9729/58



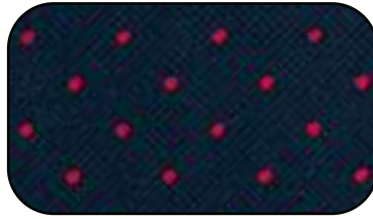
# Krawatte

tie

100 % Seide | silk **7,5 cm**



9721/15



9026/15



9716/19



9721/55



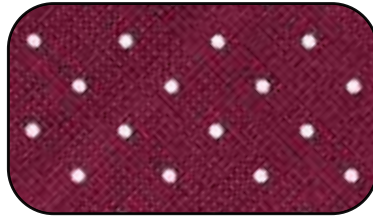
9026/19



9716/57



9721/51



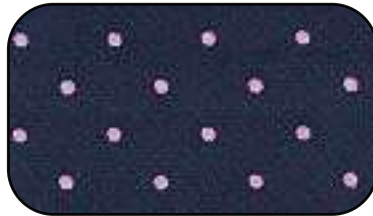
9026/58



9716/39



9721/54



9026/51



9721/58



# KONTAKTDATEN

---

CONTACT DETAILS





# Außendienst National | domestic agents

## NATIONAL SALES DEPARTMENT:

Tel.: + 49 851 98 16 - 200  
Fax: + 49 851 98 16 - 470  
E-Mail: [nationalsales@eterna.de](mailto:nationalsales@eterna.de)

WIR SIND TELEFONISCH ZU  
FOLGENDEN ZEITEN ERREICHBAR:  
MO-DO 8.00 - 17.00 UHR  
FREITAG 8.00 - 16.00 UHR

WE ARE AT YOUR DISPOSAL FROM MONDAY  
TO THURSDAY FROM 08.00 TO 17.00  
AND ON FRIDAY FROM 08.00 TO 16.00.

## IHR BETREUENDER AUSSENDIENST:

your agent

Thüringen/Sachsen-Anhalt/  
Berlin/Brandenburg/Sachsen  
**Tino Eckelt**  
Mob.: +49 170 23 0 19 74  
E-Mail: [tino.eckelt@eterna.de](mailto:tino.eckelt@eterna.de)  
Showroom:  
Mitteldeutsches Mode Center  
Haus C, 2. OG, Raum-Nr. 254  
Münchener Ring 2  
04435 Schkeuditz bei Leipzig

Nordrhein-Westfalen  
Modeagentur Wörmann  
**Carsten Wörmann**  
Oberschelps Feld 31  
33739 Bielefeld  
Tel.: +49 521 98 91 95 93  
Mob.: +49 172 2 87 31 71  
Fax: +49 521 98 91 95 94  
E-Mail: [carsten-woermann@web.de](mailto:carsten-woermann@web.de)  
Showroom:  
Halle 30  
Derendorfer Allee 12  
40476 Düsseldorf  
Tel.: +49 211 46 95 87 00  
Fax: + 49 211 46 95 87 01

Mecklenburg-Vorpommern  
Hamburg/Schleswig-Holstein  
**André Simonsen**  
Mob.: +49 151 40 55 84 07  
E-Mail: [andre.simonsen@eterna.de](mailto:andre.simonsen@eterna.de)  
Showroom:  
Modezentrum Hamburg  
Haus M11, Etage 1, Raum 117  
Modering 11  
22457 Hamburg  
Tel.: +49 40 18 07 27 87  
Fax: +49 40 58 96 94 01

München/Obb./Schwaben  
**Stefan Rindle**  
Mob.: +49 170 2 24 80 12  
E-Mail: [stefan.rindle@eterna.de](mailto:stefan.rindle@eterna.de)  
Showroom:  
MTC München, Haus 4 / Raum 402  
Taususstr. 45  
80807 München  
Tel.: +49 89 35 00 37 28  
Fax: +49 89 35 00 39 36

Düsseldorf / Köln  
Modeagentur Wörmann  
**Simone Winzen**  
Mob.: +49 163 4 78 31 37  
Fax: +49 521 98 91 95 94  
E-Mail: [agentur-woermann@web.de](mailto:agentur-woermann@web.de)  
Showroom:  
Halle 30  
Derendorfer Allee 12  
40476 Düsseldorf  
Tel.: +49 211 46 95 87 00  
Fax: + 49 211 46 95 87 01

Bremen/Niedersachsen  
**Jochen Schreier**  
Fashion - Lifestyle & Service OHG  
Bussardweg 27  
33659 Bielefeld  
Tel.: +49 521 94 73 813  
Mob.: +49 172 5 21 16 63  
Fax: +49 521 94 73 811  
E-Mail: [jochen.schreier@gmail.com](mailto:jochen.schreier@gmail.com)  
Showroom:  
Modezentrum Hamburg  
Haus M11, Etage 1, Raum 117  
Modering 11  
22457 Hamburg  
Tel.: +49 40 18 07 27 87  
Fax: +49 40 58 96 94 01

Ost-Bayern  
**Tobias Orttenburger**  
Mob.: +49 171 6 83 57 66  
E-Mail: [tobias.orttenburger@eterna.de](mailto:tobias.orttenburger@eterna.de)  
Showroom:  
MTC München, Haus 4 / Raum 402  
Taususstr. 45  
80807 München  
Tel.: +49 89 35 00 37 28  
Fax: +49 89 35 00 39 36

## Außendienst National | domestic agents

### NATIONAL SALES DEPARTMENT:

Tel.: + 49 851 98 16 - 200  
Fax: + 49 851 98 16 - 470  
E-Mail: [nationalsales@eterna.de](mailto:nationalsales@eterna.de)

WIR SIND TELEFONISCH ZU  
FOLGENDEN ZEITEN ERREICHBAR:  
MO-DO 8.00 - 17.00 UHR  
FREITAG 8.00 - 16.00 UHR

WE ARE AT YOUR DISPOSAL FROM MONDAY  
TO THURSDAY FROM 08.00 TO 17.00  
AND ON FRIDAY FROM 08.00 TO 16.00.

### IHR BETREUENDER AUSSENDIENST:

your agent

Baden-Württemberg/Nord-Bayern  
Hessen, Rheinland-Pfalz, Saarland  
Agentur Bosshardt  
Brand Synergy GmbH

**Guido Bosshardt**  
Mob.: +49 173 7 00 67 00  
E-Mail: [info@brandsynergy.net](mailto:info@brandsynergy.net)

Showroom:  
Haus der Mode  
Haus 1 Etage 6 Raum 619  
Kölner Straße 1  
65760 Eschborn

6.OG - Raum 603  
Mahdentalstraße 96-98  
71065 Sindelfingen

## Außendienst International | international agents

### INTERNATIONAL SALES DEPARTMENT:

Tel.: +49 851 98 16 - 599  
Fax: +49 851 98 16 - 467  
E-Mail: [export@eterna.de](mailto:export@eterna.de)

WIR SIND TELEFONISCH ZU  
FOLGENDEN ZEITEN ERREICHBAR:  
MO-DO 8.00 - 17.00 UHR  
FREITAG 8.00 - 14.00 UHR

WE ARE AT YOUR DISPOSAL FROM MONDAY  
TO THURSDAY FROM 08.00 TO 17.00  
AND ON FRIDAY FROM 08.00 TO 14.00.

### IHR BETREUENDER AUSSENDIENST:

your agent

### A

Tirol/Vorarlberg/Steiermark/  
Oberösterreich/Salzburg

**Wolfgang Ratzenböck**  
Kirchbergfeld 20  
A-4792 Münzkirchen  
Mob.: +43 664 3 84 60 60  
Fax: +43 7716 65 66  
E-Mail: [wolfgang.ratzenboeck@aon.at](mailto:wolfgang.ratzenboeck@aon.at)

Showroom:  
Fashion-Mall Salzburg / Top 5  
Carl-Zuckmayer-Str. 37  
5028 Salzburg

Kärnten/Osttirol  
Wien/Niederösterreich/Burgenland

**Agentur Manuela Zechner**  
Bucherlweg 74a  
A-8074 Raaba-Grambach  
Mob.: +43 664 302 2000  
E-Mail: [thomas-zechner@aon.at](mailto:thomas-zechner@aon.at)

Showroom:  
Fashion-Mall Salzburg / Top 5  
Carl-Zuckmayer-Str. 37  
5028 Salzburg

### CH

**Beutler fashion group**  
**Dominik Bünter**  
Mob.: +41 79 951 34 67  
E-Mail: [eterna@beutler.ch](mailto:eterna@beutler.ch)

TMC Galleria  
Thurgauerstr. 119 EG  
CH-8152 Glattbrugg ZH

### F

**OTT FASHION**  
Service Commercial/Showroom:  
Aéroparc 3  
3 rue du Tonnelier  
F-67960 Entzheim  
Tél.: +33 3 88 32 39 52  
Fax: +33 9 70 32 04 53  
E-Mail: [ottfashion@gmx.fr](mailto:ottfashion@gmx.fr)

Directeur Commercial  
Francis Glasser  
Portable: +33 07 60 59 24 04

INTERNATIONAL  
SALES DEPARTMENT:

Tel.: +49 851 98 16 - 599  
Fax: +49 851 98 16 - 467  
E-Mail: export@eterna.de

WIR SIND TELEFONISCH ZU  
FOLGENDEN ZEITEN ERREICHBAR:  
MO-DO 8.00 - 17.00 UHR  
FREITAG 8.00 - 14.00 UHR

WE ARE AT YOUR DISPOSAL FROM MONDAY  
TO THURSDAY FROM 08.00 TO 17.00  
AND ON FRIDAY FROM 08.00 TO 14.00.

IHR BETREUENDER AUSSENDIENST:

your agent

**S**  
**Menswear For Sweden AB**  
**Kenny Gustafsson**  
Fashion House  
Göteborgsvägen 89  
431 30 Mölndal  
Tel.: +46 723 959286  
E-Mail: kgagenturer@gmail.com

**N**  
**Sæther & Sørnæs AS**  
Norwegian fashion center  
Rom 5E-03  
Snarøyveien 30, 1360 Fornebu  
Tel.: +47 2300 1585  
Fax: +47 2300 1775  
E-Mail:  
ordre@sether-sornes.no  
post@sether-sornes.no  
www.sether-sornes.no

**NL**  
**Enthoven Agenturen B. V.**  
Léon Enthoven  
Weteringsingel 14  
NL-3353 GZ Papendrecht  
Tel.: +31 78 644 17 17  
Fax: +31 78 615 94 38  
E-Mail: info@enthoven.nl

**DK**  
**Henrik C. Svendsen**  
**Tekstilagentur I/S**  
Sadolinsvænget 7  
DK-5230 Odense M.  
Tel.: +45 6591 0072  
Fax: +45 6591 0076  
E-Mail: kontor@hcs-tekstilagentur.dk  
Internet: eternadanmark.dk  
Showroom: Bella-Center  
Cliff Show-Rooms Stand B2-102  
- Mens Shirts

**GB**  
**McCotter Agencies Ltd.**  
Suite 3 · 9-15 Queen Street  
Belfast BT1 6EA/N, Ireland  
Tel.: +44 28 9032 7770  
Fax: +44 28 9032 7776  
E-Mail: eterna@mccotterandson.co.uk

**IRL**  
**McCotter Agencies Ltd.**  
Suite 3 · 9-15 Queen Street  
Belfast BT1 6EA/N, Ireland  
Tel.: +44 28 9032 7770  
Fax: +44 28 9032 7776  
E-Mail: eterna@mccotterandson.co.uk

**Bill McCotter**  
Mob.: +44 7748 187917  
E-Mail: bill@mccotterandson.co.uk

**Bill McCotter**  
Mob.: +44 7748 187917  
E-Mail: bill@mccotterandson.co.uk

**Neal McCotter**  
Mob.: +353 87 2563016  
Mob.: +44 7920 187227  
E-Mail: neal@mccotterandson.co.uk

**Neal McCotter**  
Mob.: +353 87 2563016  
Mob.: +44 7920 187227  
E-Mail: neal@mccotterandson.co.uk

**I**  
Emilia-Romagna:  
**Andrea Orsoni**  
Via Ferrarese 3  
40128 Bologna  
Mob.: +39 33 53 41 185  
E-Mail: orsonii@gmail.com

Friaul-Venezia-Giulia,  
Trentino, Veneto, Alto Adige:  
**Granzotto Rappresentanze SAS**  
**di Granzotto Giuseppe e c.**  
Via Venezia 5  
I-35020 Casalserugo (PD)  
Mob.: +39 348 420 7906  
E-Mail: granzotto.giuseppe@gmail.com

## INTERNATIONAL SALES DEPARTMENT:

Tel.: +49 851 98 16 - 599  
Fax: +49 851 98 16 - 467  
E-Mail: [export@eterna.de](mailto:export@eterna.de)

WIR SIND TELEFONISCH ZU  
FOLGENDEN ZEITEN ERREICHBAR:  
MO-DO 8.00 - 17.00 UHR  
FREITAG 8.00 - 14.00 UHR

WE ARE AT YOUR DISPOSAL FROM MONDAY  
TO THURSDAY FROM 08.00 TO 17.00  
AND ON FRIDAY FROM 08.00 TO 14.00.

## IHR BETREUENDER AUSSENDIENST:

your agent

### UA, MD

**Natalia & Pavel Cojocar**  
Tel.: +49 211 7489069  
Fax: +49 211 74905947  
Mob.: +49 160 97311333  
Mob. Ukraine: +380 50 8691632  
Mob. Moldawien: +373 68 704430  
E-Mail: [eterna-cojocar@online.de](mailto:eterna-cojocar@online.de)

### CZ, SK

**MGTRADE s.r.o.**  
Renata de la Sierra  
Gorazdova 34,  
81104 Bratislava  
Slowakei  
Mob.: +421 905 947 344  
E-Mail: [renka.eterna@gmail.com](mailto:renka.eterna@gmail.com)

### HU

**Gárdos Agentura Kft.**  
H-2040 Budaörs Fashion Trend Center  
Gyár u. 2. + 1. emelet 3.29-3.31  
Tel./Fax: +36 1 452 7281  
Mob.: +36 30 925 5188  
E-Mail: [office@gardosagentura.hu](mailto:office@gardosagentura.hu)

### CDN

**Silvio Marando**  
400 Atlantic ave., RC-102  
Montreal, QC/Canada  
H2V 1A5  
Tel.: +1 514 273 6663  
Fax: +1 514 273 4082  
E-Mail: [info@silviomarando.com](mailto:info@silviomarando.com)

### SI, HR, RS, ME, BA, MK

**Mirz.d.o.o.**  
Mitja Zrim  
Vrbisce 17a  
SLO-9000 Murska Sobota  
Tel.: +386 2 526 13 25  
Mob.: +386 40 472 925  
Fax: +386 2 620 08 79  
E-Mail: [mitja.zrim@mirz.si](mailto:mitja.zrim@mirz.si)

### AUS

**Brand Equity Pty Ltd**  
Mark Cook  
7/30-32 Beaconsfield St  
Alexandria NSW 2015  
Australia  
Tel.: +61 2 9693 5800  
Mob.: +61 410 60 9597  
Fax: +61 2 9693 5700  
E-Mail: [sales@kencook.com.au](mailto:sales@kencook.com.au)

### BE, LU

**Woodville fashion agency bvba**  
Showroom:  
Trade Mart - Fashion Gardens -  
Firenze F110  
Atomiumlaan 1 PB33  
1020 Brussels  
Belgium

**Hannelore Engelbosch**  
Tel.: +32 477 29 20 71  
E-Mail: [info@eternabelux.be](mailto:info@eternabelux.be)

**Francis Ryckmans**  
Tel.: +32 478 55 56 86  
E-Mail: [info@eternabelux.be](mailto:info@eternabelux.be)

### FIN

**Fashion Center**  
Petteri Martikainen  
Härkähaankuja 14  
01730 Vantaa  
Finland  
Tel.: +358 40 55 65423  
E-Mail: [petterimartikainen@hotmail.com](mailto:petterimartikainen@hotmail.com)

### RO

**S.C. Transtex SRL**  
STR. Tarnavei nr.2  
545400 SIGHISOARA  
Contact : Ovidiu Soneriu  
Tel.: +40 265 77 22 99  
Fax: +40 265 77 46 51  
E-Mail: [office@transtex.ro](mailto:office@transtex.ro)

ETERNA Mode GmbH | Medienstraße 12 | 94036 Passau | Germany  
Registerrichter | Court of registration: Passau  
Registernummer | Commercial register number: HRB 6989  
Geschäftsführer | CEO: Henning Gerbaulet

<https://unternehmen.eterna.de/>

FOLLOW US!



E-Mag









[WWW.ETERNA.DE](http://WWW.ETERNA.DE)